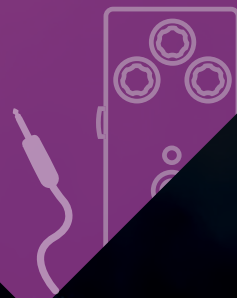


WHARRY

CATALOG

EFFECT PEDALS & AMPLIFICATION

2024



cry baby



WAY HUGE
ELECTRONICS

MAD PROFESSOR

Fender

Seymour
Duncan

XVIVE

NEW PRODUCTS _____ **3**

PEDALS FOR ELECTRIC GUITAR _____ **4**

| | |
|-------------------------|----|
| DUNLOP (INCL. CRY BABY) | 5 |
| MXR | 12 |
| WAY HUGE | 23 |
| MAD PROFESSOR | 26 |
| FENDER | 28 |
| XVIVE | 34 |
| SEYMOUR DUNCAN | 37 |

PEDALS FOR BASS GUITAR _____ **39**

| | |
|----------------|----|
| CRY BABY | 40 |
| MXR | 40 |
| WAY HUGE | 42 |
| MAD PROFESSOR | 42 |
| FENDER | 42 |
| XVIVE | 42 |
| SEYMOUR DUNCAN | 42 |

AMPLIFICATION _____ **43**

| | |
|--------|----|
| FENDER | 44 |
| GODIN | 44 |

PEDALBOARD _____ **45**

| | |
|--------|----|
| FENDER | 46 |
| XVIVE | 47 |

PEDALS PER EFFECT _____ **48**

NEW 2024

MXR



**M309 JOSHUA®
AMBIENT ECHO**
p. 16



**M231 TRS
SPLIT+ TAP**
p. 19



**M242 ISO-BRICK™ PRO
POWER SUPPLY**
p. 19



**CSP033G GRAN TORINO™
BOOST OVERDRIVE**
p. 20



**M307
LAYERS**
p. 16



**RR104 RANDY RHOADS
DISTORTION +**
p. 19



**YJM308 YNGWIE
MALMSTEEN OVERDRIVE**
p. 19

Dunlop



**WA357 WYLDE AUDIO
ROTOVIBE® CHORUS/
VIBRATO**
p. 6



**WA45 WYLDE AUDIO
SIGNATURE
CRY BABY®**
p. 11

**WAY HUGE
ELECTRONICS**



**WM32 SMALLS™
GEISHA DRIVE**
p. 24



ELECTRIC GUITAR


FUZZ FACE® THE STANDARD RED DISTORTION
Art. N°: JD-F2
RRP CHF 200.00

- The classic fuzz box used by legendary rockers of the '60s and '70s
- Built to the exact specs of the original Dallas-Arbitor Fuzz Face pedal
- Warm germanium tones


SILICON FUZZ FACE® MINI DISTORTION
Art. N°: FFM1
RRP CHF 176.00

- Legendary Fuzz Face tone with pedalboard-friendly size, AC power and on/bypass status LED
- Spec'd from our own prized 1970 Fuzz Face pedal
- Bright, aggressive sounding BC108 transistors
- True bypass


GERMANIUM FUZZ FACE® MINI DISTORTION
Art. N°: FFM2
RRP CHF 176.00

- Legendary Fuzz Face tone with pedalboard-friendly size, AC power & on/bypass status LED
- Based on '66-'68 era pre-silicon Fuzz Face pedals
- Warm vintage fuzz tones provided by slightly mismatched germanium transistors
- True bypass


ECHOPLEX® PREAMP
Art. N°: EP101
RRP CHF 176.00

- The EP-3's legendary tone conditioning mojo in a Phase 90-sized box
- Adds up to +11dB of gain
- Smooth breakup at higher gain levels
- True Bypass


ECHOPLEX® DELAY
Art. N°: EP103EU
RRP CHF 235.00

- Vintage Echoplex EP-3 tape echo warmth and modulation
- Hi-fi audio paths with 100% analog dry path
- Studio-grade low noise floor
- Age control varies delay tone from pristine to dark and dirty
- Delay control provides 65-750ms of delay time; MXR Tap Tempo Switch (not included) provides up to 4s


ROTOVIBE® CHORUS/VIBRATO
Art. N°: JD-4S
RRP CHF 352.00

- Rotating speaker simulator recreates "shimmering" tones
- Popularized by many artists, including Jimi Hendrix
- Select Chorus or Vibrato modes with adjustable intensity


VOLUME (X) & EXPRESSION PEDAL
Art. N°: DVP3
RRP CHF 165.00

- Control your volume levels or effects pedals with exacting precision
- Patented Low Friction Band-Drive for highly reliable action
- Fully adjustable rocker tension


VOLUME (X) MINI & EXPRESSION PEDAL
Art. N°: DVP4
RRP CHF 165.00

- Controls volume and FX pedals with precision
- Patented Low Friction Band-Drive for durable action
- Fully adjustable rocker tension
- Perfect size for travel boards


VOLUME (X) 8 LOW FRICTION BAND-DRIVE
Art. N°: DVP5
RRP CHF 165.00

- Designed with Pedaltrain for tight layouts & tidy routing of cords
- 8" length for perfect alignment with Metro, Classic, Novo, and Terra Series pedalboards
- Create incredibly smooth volume swells or control your favorite FX parameters
- Patented Low Friction Band-Drive for long-lasting performance.
- Features Volume, FX, Output, and Tuner jacks.


BAND OF GYPSYS FUZZ FACE MINI® DISTORTION
Art. N°: FFM6
RRP CHF 200.00

- The biting, aggressive fuzz tone used by Jimi Hendrix for the Band of Gypsys show and other iconic performances
- Pedalboard-friendly Fuzz Face Mini housing with AC power and on/off status LED
- True bypass


JIMI HENDRIX™ FUZZ FACE® MINI DISTORTION
Art. N°: FFM3
RRP CHF 200.00

- Legendary Fuzz Face tone with pedalboard-friendly size, AC power and on/bypass status LED
- Featuring the same circuit as the JHF1 in a smaller housing
- Get the thick, smooth Fuzz Face tone that Jimi Hendrix made famous
- True bypass


JIMI HENDRIX™ SIGN. FUZZ FACE® DISTORTION
Art. N°: JH-F1
RRP CHF 200.00

- Meticulously faithful reproduction of Jimi's 1969-70 Dallas-Arbiter Fuzz Face pedal
- Built around the toneful BC108 silicon transistor
- True Bypass


JOE BONAMASSA FUZZ FACE® MINI DISTORTION
Art. N°: FFM4
RRP CHF 200.00

- Hand-wired with Russian military germanium transistors
- Pedalboard-friendly size, AC power and on/bypass status LED
- Rich black gloss finish
- True bypass


BILLY GIBBONS OCTAVIO FUZZ DISTORTION
Art. N°: BFG07
RRP CHF 294.00

- The Rev. Billy Gibbons' secret solo recipe in a single box
- Combines the Octavo Fuzz with a 7-band EQ for sculpting and refining tones
- Upgraded with convenient AC power jack
- Decked out in custom Pinstripe Billy design
- Limited to 500 pieces


ROTOVIBE WYLDE AUDIO CHORUS/VIBRATO
Art. N°: WA357
RRP CHF 449.00

- 20 years of Zakk Wylde + Dunlop
- Adds rich, fluid textures
- Spice up solos, rhythms, and overdubs



CRY BABY® JUNIOR WAH SPECIAL WHITE EDITION

Art. N°: CBJ95SW
RRP CHF 153.00

- Combined the classic Cry Baby 'rocker housing' silhouette with a bold Cry Baby 'wave logo' pattern and contrasting footwear-inspired tread
- Designed in collaboration with Pedaltrain
- On the side of the pedal is a convenient & accessible 3-position switch that allows you to choose one of our three most popular Cry Baby Wah voices, covering the full frequency spectrum.



CRY BABY® JUNIOR WAH SPECIAL BLACK EDITION

Art. N°: CBJ95SB
RRP CHF 153.00

- Combined the classic Cry Baby 'rocker housing' silhouette with a bold Cry Baby 'wave logo' pattern and contrasting footwear-inspired tread
- Designed in collaboration with Pedaltrain
- On the side of the pedal is a convenient & accessible 3-position switch that allows you to choose one of our three most popular Cry Baby Wah voices, covering the full frequency spectrum.



CRY BABY® JUNIOR WAH

Art. N°: CBJ95
RRP CHF 153.00

- Designed with Pedaltrain for tight layouts and tidy routing of cords
- Front-mounted input, output, & power jacks
- 8" length for perfect alignment with Metro, Classic, Novo, and Terra Series pedalboards
- Switch between high, mid, and low Cry Baby Wah voices
- Convenient on/off status led shows when effect is engaged



CRY BABY® MINI WAH

Art. N°: CBM95
RRP CHF 141.00

- Half the size of a standard Cry Baby pedal—perfect for mini boards
- Three internally adjustable voicings—Low, Middle (vintage), and High (modern)
- Full sweep range
- True bypass switching



CRY BABY® ORIGINAL WAH

Art. N°: GCB-95
RRP CHF 119.00

- Red Fasel Inductor for focused highs and an aggressive response
- Lush, expressive character
- The definitive modern interpretation of a classic effect
- For players who want a straight-up no-frills wah



CRY BABY® CLASSIC WITH FASEL INSIDE

Art. N°: GCB-95F
RRP CHF 153.00

- Vintage wah tones interpreted through the circuitry of the GCB95
- Sweet midrange and subtle response
- True bypass



HIGH GAIN™ VOLUME PEDAL

Art. N°: GCB-80
RRP CHF 141.00

- Heavy-duty construction
- Ultra-sensitive 1-million cycle pot
- Exercise delicate control over wide volume swells



CUSTOM BADASS CRY BABY

Art. N°: GCB65
RRP CHF 259.00

- Combines two iconic wah sounds in a single pedal
- Halo Inductor provides throaty midrange and expressive sweep, while red Fasel Inductor provides bright clarity and lush harmonics
- Toggle between the two with side kickswitch
- Convenient LEDs indicate inductor choice and on/off status
- Fine-tune knobs adjust toe-down frequency from bright to dark
- **LIMITED EDITION**



**CRY BABY® MINI
535Q WAH**

Art. N°: CBM535Q
RRP CHF 200.00

- The perfect balance of wah control and pedalboard efficiency
- Four different frequency sweep ranges to set your own tonal character
- Adjustable, switchable boost allows you to step out in front of the mix
- Q control shapes effect response from sharp to smooth
- Equipped with the legendary red Fasel Inductor



**CRY BABY® MINI
535Q AUTO RETURN
WAH**

Art. N°: CBM535AR
RRP CHF 212.00

- The perfect balance of wah control, pedalboard efficiency, and onstage convenience
- Auto-return switching for fast and easy engagement of effect
- Four different frequency sweep ranges to set your own tonal character and an adjustable, switchable boost for stepping out in front of the mix
- Q control shapes wah response from narrow to wide
- Equipped with the legendary red Fasel Inductor



**CRY BABY® MULTI
WAH BLACK**

Art. N°: 535Q
RRP CHF 200.00

- Provides control over the most important wah parameters
- Six selectable frequency ranges from bright & aggressive to dark & subtle
- Q control shapes effect response from sharp to smooth
- Switchable boost adjustable up to +16dB
- True bypass



**CRY BABY® MULTI
WAH CHROME**

Art. N°: 535Q-Chrome
RRP CHF 270.00

- Provides control over the most important wah parameters
- Six selectable frequency ranges from bright & aggressive to dark & subtle
- Q control shapes effect response from sharp to smooth
- Switchable boost adjustable up to +16dB
- True bypass



**CRY BABY® WAH
CONTROL &
VOLUME BOOST**

Art. N°: 95Q
RRP CHF 176.00

- Provides extra control over the modern, aggressive sound of the GCB95
- Adjustable boost up to +16dB
- Q control shapes effect response from sharp to smooth
- Convenient auto-return switching so you can step in and out of the effect



**CRY BABY® RACK
FOOT CONTROLLER
FOR RACK**

Art. N°: DCR-1FC
RRP CHF 179.00

- The companion pedal to the DCR-2SR Crybaby Rack Module
- Dial in your custom Cry Baby Wah settings on the rack module and use the foot controller while you play
- Rocker position controls the wah effect

**Also Available:
DCR-1FC-H Auto Return
(Custom Shop)**



Q-ZONE FIXED WAH

Art. N°: QZ1
RRP CHF 176.00

- Get the sound of a fixed wah without the rocker
- The richly resonant secret weapon sound of many a guitar player
- Simple control interface allows for adjustment of boost, bandpass shape, and frequency center
- Dial in your sound and start playing without worrying about accidentally moving a rocker



CUSTOM SHOP EURO CRY BABY® RACK MODULE

Art. N°: DCR-2SR-EU
RRP CHF 839.00

- Amazingly flexible wah tones
- Legendary Fasel inductor for incredibly vocal wah tone and sweep
- Rack mounting keeps signal chain in the rack
- Six-position frequency selector and Variable Q control
- Six controller inputs to accommodate multiple pedals on stage volume pedal capabilities
- Six-band EQ for additional tone sculpting and preset volume boost up to +10dB

cry baby **SIGNATURE SERIES**



BUDDY GUY SIGN. CRY BABY®

Art. N°: BG-95
RRP CHF 235.00

- Red Fasel Inductor for a sweet, singing top end
- Two switchable voices: big, throaty growl or warm, bell-like tone
- LEDs indicate voice selection and bypass status.



CLYDE MCCOY® SIGN. CRY BABY®

Art. N°: CM95
RRP CHF 235.00

- Faithfully represents the tone and spirit of the very first wah pedal
- Proprietary Halo™ inductor reproduces the original's famous vocal sound while minimizing microphonic noise thanks to its stabilized cup core
- Thru-hole components built into a classic housing with premium hardware



DIME® CRY BABY® FROM HELL WAH

Art. N°: DB01B
RRP CHF 235.00

- Wide sweep range
- 6 different frequency ranges
- Adjustable, switchable boost, Q control shapes wah response from wide to narrow, and Fine-tune control adjusts toe-down frequency
- Back-mounted LEDs indicate wah & boost on/off status
- Extra output for splitting your signal to a separate FX chain
- Skateboard skid-tape tread lets you keep rocking even if a beverage spills on your pedal



CRY BABY FUZZ WAH DAREDEVIL

Art. N°: DD95FW
RRP CHF 270.00

- The resulting collaboration, and in true Daredevil fashion, it's straight-forward & downright dirty
- Fuses the expressive voice of a modded Cry Baby with a gnarly custom fuzz circuit.
- Heavy-duty baseball bat switch toggles fuzz on and off.
- Internal pots control pedal output and fuzz intensity-perfect for instant lead tone.
- Vintage crinkle finish base with polished aluminum rocker top and a custom tread.
- Hand-built with thru hole components and true bypass switching.



**EDDIE VAN HALEN
SIGN. CRY BABY®**

**Art. N°: EVH-95
RRP CHF 235.00**

- Based Eddie's customized '90s wah
- Wide sweep with aggressive mid-range
- Van Halen II black-and-yellow striped graphics
- Two on/off status LEDs
- True bypass



**GARY CLARK JR
SIGN. CRY BABY®**

**Art. N°: GCJ95
RRP CHF 200.00**

- Low frequency center provides smooth, warm sound.
- Tight sweep range is perfect for percussive, syncopated rhythms
- Classy brushed patina copper housing



**JOE BONAMASSA
SIGN. CRY BABY®**

**Art. N°: JB-95
RRP CHF 235.00**

- Equipped with improved Halo Inductor design for authentic vintage voice
- Wide, vocal sweep range
- Output buffer prevents impedance imbalance
- Switchable true bypass/buffered bypass operation
- Aluminum housing with copper rocker



**JERRY CANTRELL
SIGN. CRY BABY®
DISTRESSED BLACK**

**Art. N°: JC95B
RRP CHF 235.00**

- Dark and moody tone with a wide response
- Retains low-end punch
- Fine-Tune knob adjusts range of toe-down position from bright to dark
- Distressed black finish
- Custom tribal orca treadle
- LIMITED to 4pcs. in Switzerland



**JERRY CANTRELL
SIGN. CRY BABY®
FIREFLY**

**Art. N°: JC95FFS
RRP CHF 235.00**

- Special edition makeover inspired by Jerry Cantrell's solo record, Brighten.
- Glow-in-the-dark elements stand out and shine in contrast with raw iron finish.
- Custom-voiced for a tight, punchy heel-down tone.
- Rugged side-control knob for fine-tuning the toe-down frequency.
- Perfect for nailing Jerry's famous wah tone.



**JUSTIN
CHANCELLOR SIGN.
CRY BABY®**

**Art. N°: JCT95
RRP CHF 352.00**

- Combines 3 of Justin Chancellor's epic effects into a single pedal
- U.K. Filter, inspired by his bass' tone circuit, sounds thick and voice-like
- Modified Cry Baby Wah sounds lush and aggressive
- Vintage U.K.-style fuzz that can be paired with either mode or operated independently
- Customize the two rocker modes with Volume and Q controls
- Customize intensity, level, and EQ of fuzz mode
- Includes Pedal Topper to allow for simultaneous engagement of rocker and fuzz modes



**JIMI HENDRIX™
SIGN. CRY BABY®**

**Art. N°: JH-1D
RRP CHF 200.00**

- Recreates the legendary wah sound from classic Jimi Hendrix tracks
- Throaty & expressive voice
- Lightweight aluminum housing



**JIMI HENDRIX™ CRY
BABY® MINI WAH**

**Art. N°: JHM9
RRP CHF 155.00**

- Hendrix's huge sound in a mini housing
- Chrome top rocker with black gator base
- True bypass switching



**JOHN PETRUCCI
SIGN. CRY BABY®**

**Art. N°: JP95
RRP CHF 235.00**

- Based on John Petrucci's Cry Baby Rack Wah settings
- Ultimate tonal control of wah effect
- Features Volume, Q, and six EQ controls inside the pedal
- Smoked chrome finish and JP shield logo tread



**KIRK HAMMETT
SIGN. CRY BABY®**

**Art. N°: KH-95
RRP CHF 235.00**

- Based on Kirk's Cry Baby Rack Wah settings
- Pronounced midrange wail
- Exceptionally even response from heel to toe
- True bypass



**KIRK HAMMETT
SIGN. CRY BABY® V2**

**Art. N°: KH95X
RRP CHF 259.00**

- Based on Kirk's own Cry Baby Rack Wah settings.
- Capture the same sound he used to revolutionize metal solos.
- Thick top end with a full dynamic range.
- Special edition purple sparkle finish.



**LEO NOCENTELLI
SIGN. CRY BABY®**

**Art. N°: LN95
RRP CHF 235.00**

- Pays tribute to a master of funk, the magical city he was born and raised in, and the greasiest effect ever conceptualized
- Dressed in deep purple, flashy gold, and cash-money green with a custom fleur-de-lis tread.
- With a lowered frequency range, it serves up the warm vocalic wah tones that Leo has conjured up his entire career.



**SLASH SIGN. CRY
BABY® CLASSIC**

**Art. N°: SC95
RRP CHF 212.00**

- Wide, dynamic sweep range
- Warm, throaty sound
- Two on/off status LEDs
- True bypass



**SLASH SIGN. CRY
BABY®**

**Art. N°: SW-95
RRP CHF 235.00**

- Classic wah tone with switchable high-gain distortion
- Gain and Volume controls to dial in each effect
- LEDs indicate wah and distortion on/off status
- Topside battery access
- True bypass



**TOM MORELLO
SIGN. CRY BABY®**

**Art. N°: TBM95
RRP CHF 153.00**

- Aggressive, modern sound of the GCB95—the exact pedal Tom has used on every album and every tour throughout his career—with a custom finish bearing quotations chosen by Tom himself to highlight the battle for justice that he's dedicated his craft and career to.



**ZAKK WILDE SIGN.
CRY BABY®**

**Art. N°: WA45
RRP CHF 229.00**

- 20 years of Zakk Wylde + Dunlop
- Tuned to Zakk's specs
- Thick, cutting tones

MXR CUSTOM AUDIO ELECTRONICS



BOOST/LINE DRIVER

Art. N°: MC-401
RRP CHF 141.00

- The problem solver for a variety of mismatched line level & signal conditioning problems that can occur when combining effects
- Boost function with knob adjustment from 0 to +20dB of clean uncolored boost
- True bypass



BOOST/OVERDRIVE

Art. N°: MC-402
RRP CHF 200.00

- Offers the combination of a simple dynamic overdrive and an independent clean boost circuit.
- The overdrive section is truly "classic," adding warmth, sustain, and punch without coloring your sound. The boost circuit alone is a bonus.



CAE WAH (WITH TRUE BYPASS)

Art. N°: MC-404
RRP CHF 223.00

- Two switchable inductors for a warm, vintage vibe or bright transparency
- Built-in MXR Boost/Line Driver circuit provides adjustable, switchable boost
- Internal Q controls shape the effect response for each inductor
- True bypass



CAE BUFFER

Art. N°: MC-406
RRP CHF 118.00

- Low-noise buffer in a small, rugged steel housing
- Hi and Lo cut options with indication LEDs
- Adjustable 0 to +6dB gain slider
- Features a pass-through 9-volt jack for other effects

MXR CLASSICS



PRIME DISTORTION

Art. N°: M69
RRP CHF 83.00

- Vintage hard clipping
- Highly responsive to attack
- 100% analog
- NEW COLOR 2024



SUPER BADASS DISTORTION

Art. N°: M75
RRP CHF 153.00

- Full spectrum of distortion
- From gritty early '70s overdrive to scooped modern crunch
- Active EQ section for accurate, highly controlled tonal shaping
- 100% analog circuitry
- True bypass switching



CUSTOM BADASS '78 DISTORTION

Art. N°: M78
RRP CHF 141.00

- A hot-rod classic circuit
- Roars with huge amp stack tones and old school distortion
- Delivers soaring leads and rich, saturated rhythms
- CRUNCH button boosts harmonic content of distortion



BLUE BOX™ OCTAVE FUZZ DISTORTION

Art. N°: M103
RRP CHF 118.00

- Huge subterranean tones
- Fuzzes up your guitar signal, then duplicates it two octaves down
- Blend control sets mix of wet and dry signals
- Used by Jimmy Page for the solo in Led Zeppelin's "Fool in the Rain"



DISTORTION +

Art. N°: M104
RRP CHF 118.00

- Germanium-powered, soft-clipped distortion
- Go from warm, tubey overdrive to gnarly fuzz
- Classic early '80s hard rock tone



DISTORTION III

Art. N°: M115
RRP CHF 118.00

- Dynamic, touch-sensitive response
- Proprietary circuit design delivers rich harmonics
- Large output range
- True bypass



FULLBORE® METAL DISTORTION

Art. N°: M116
RRP CHF 141.00

- Super high-gain distortion
- 3-band EQ with midrange sweep
- SCOOP switch boosts highs and lows
- Switchable Noise Gate with sensitivity control



CLASSIC 108 FUZZ DISTORTION

Art. N°: M173
RRP CHF 200.00

- BC108 Fuzz Face® Distortion circuitry in a pedal-board friendly chassis
- Original Fuzz Face hammer-tone turquoise finish
- True bypass



SUB MACHINE FUZZ DISTORTION

Art. N°: M225
RRP CHF 223.00

- Combines La Machine Fuzz with old school Sub-Octave signal
- Separate volume levels for Fuzz and Sub-Octave signals
- Toggle between Series/Parallel modes
- Octave switch kicks Fuzz signal into Octave Up mode



SUPER BADASS VARIAC FUZZ DISTORTION

Art. N°: M236
RRP CHF 176.00

- Tuned up rare vintage silicon fuzz circuit
- Variac control sets effect voltage from 5V-15V
- Lowering the voltage gives you saggy "dying battery" effect
- Increasing the voltage raises the effect's headroom provides a more transparent, wide open sound
- True bypass



OCTAVIO FUZZ DISTORTION

Art. N°: M267
RRP CHF 176.00

- The classic effect made famous by Jimi Hendrix now comes in a pedalboard-friendly MXR housing
- Simple 2-control interface coaxes out legendarily searing, synth-like tones
- Convenient on/bypass LED & AC power jack for modern players



CLASSIC 108 FUZZ MINI DISTORTION

Art. N°: M296
RRP CHF 141.00

- Same vintage tones in an MXR mini housing
- No-nonsense two-knob interface
- Buffer switch makes fuzz play nice with wah pedals
- True bypass
- Includes ECB003 9V Adapter



**POLY BLUE OCTAVE
DISTORTION**

Art. N°: M306G1
RRP CHF 259.00

- Brings modern and classic pitch shifting styles together with fuzz and modulation to create the ultimate octave pedal for tonecrafters and sonic seekers
- Features four separate octave divisions
- The Mono switch takes you back to the gritty, monophonic tones of analog style pitch shifters
- Comes equipped with an unruly fuzz that's inspired by the classic MXR Blue Box™ Fuzz



**CUSTOM BADASS
MODIFIED O.D.
OVERDRIVE**

Art. N°: M77
RRP CHF 141.00

- Classic overdrive circuit hot-rodded for added versatility
- Adds sustain and gain without coloring your guitar's tone
- 100Hz knob allows a more focused EQ when cut or a beefier tone when boosted
- BUMP switch engages an alternate EQ voicing that boosts lows and mids
- True bypass



FAT SUGAR DRIVE

Art. N°: M94SE
RRP CHF 159.00

- Brings the Sugar Drive's diverse range of clear and transparent overdrive tones to MXR's classic housing for players who prefer its footprint over that of the mini.
- Unique Drive control—which replicates an amp's transition from clean to dirty by blending your clean signal at the start of the sweep.



GT-OD OVERDRIVE

Art. N°: M193
RRP CHF 141.00

- Traditionally warm & transparent overdrive
- Single tone control makes tone-shaping simple
- Adds sustain and gain without coloring your guitar or amp's tone



**SUPER BADASS
DYNAMIC O.D.
OVERDRIVE**

Art. N°: M249
RRP CHF 153.00

- Add extra bite to any rig while preserving your tonal dynamics.
- MOSFET clipping diodes for smooth, purring overdrive.
- Shift gears from a nice, clean boost to vintage high-grain grind.
- Boost/Cut switch bumps the whole signal with a little extra mid-range or drops everything down a notch.
- The perfect pedal for taking your warmed up tube amp over the frish line.



**FOD DRIVE
OVERDRIVE**

Art. N°: M251
RRP CHF 200.00

- Two highly coveted amp stacks recreated in MXR pedal form
- High Gain channel provides super high gain saturation, Crunch Gain provides punchy midrange crunch
- Separate controls for each channel—blend them to create your own harmonic palette
- Scoop switch selects flat, scooped, or boosted midrange voice
- Recreate the experience of playing through two amp stacks at once



**SUGAR DRIVE MINI
OVERDRIVE**

Art. N°: M294
RRP CHF 153.00

- Enhances the natural voice of your rig
- Clear, transparent performance and a diverse range of uses, from boosting to overdrive
- Blends in clean signal to maintain your guitar's character
- Buffer switch toggles between true & buffered bypass switching
- Increased headroom for dynamic, wide open sound
- Includes ECB003 9V Adapter



**UNI-VIBE® CHORUS/
VIBRATO
MODULATION**

Art. N°: M68
RRP CHF 176.00

- Legendary effect in a smaller housing
- Chorus mode sounds rich, lush
- Vibrato delivers a deep, shimmering texture
- True bypass switching



**PHASE 90
MODULATION**

Art. N°: M101
RRP CHF 118.00

- The standard by which all other phasers are judged
- Take it from subtle, spatial shimmer to all-out high-velocity swooshing
- Enhances the tonal palette of any instrument—including the human voice
- True bypass



**PHASE 100
MODULATION**

Art. N°: M107
RRP CHF 176.00

- Big brother of the Phase 90 with a broader range of sounds
- 4-position rotary switch selects four preset waveforms
- Spacey, psychedelic ambience for guitar solos or chords



**FLANGER
MODULATION**

Art. N°: M117R
RRP CHF 223.00

- A staple of funky '70s sounds, from jet plane to space effects
- Numerous tweakable parameters
- Does the work of a flanger, chorus, delay and more



**STEREO CHORUS
MODULATION**

Art. N°: M134
RRP CHF 223.00

- Rich analog chorusing
- Bass and Treble controls for shaping chorus tone
- Bass Filter switch for increased low end clarity
- Analog bucket-brigade technology



**ANALOG MICRO
CHORUS
MODULATION**

Art. N°: M148
RRP CHF 141.00

- Adds rich chorus textures, from sparkly watery shimmers to intense rotating speaker simulation
- All analog circuitry with bucket brigade technology for warm analog tone
- Joins the ranks of MXR Classics such as the Phase 90, Dyna Comp and Micro Amp
- True bypass with LED



**ANALOG MICRO
FLANGER
MODULATION**

Art. N°: M152
RRP CHF 141.00

- Originally released in the '80s, this faithful recreation features the same critical controls—a Rate knob to control the speed of cycling and a Regen knob to manage the overall intensity—staying true to its 100% analog bucket brigade technology for the ultimate in warm and organic tone.
- The Micro Flanger has been updated with a true bypass switch. Go from jet plane sweeps to cool outer space effects.
- Power: Dunlop ECB-03E AC Adapter or single 9 volt battery



**CARBON COPY®
ANALOG DELAY
MODULATION**

Art. N°: M169
RRP CHF 176.00

- The world's bestselling analog delay pedal
- Authentic analog bucket brigade warmth
- Simple control interface for quick setup
- Up to 600ms of delay time
- Mod section for vintage tape echo wow and flutter



**TALK BOX
MODULATION**

Art. N°: M222EU
RRP CHF 235.00

- Self-contained amp and speaker driver - no need for a separate rig.
- Volume, Tone and Gain controls for tone-shaping.
- Pedalboard-friendly size.



ANALOG CHORUS
MODULATION

Art. N°: M234
RRP CHF 153.00

- Analog bucket-brigade technology
- Small footprint saves pedalboard space
- HIGH and LOW cut controls for detailed tone sculpting
- Two outputs for a wide and sweeping stereo spread



DEEP PHASE MINI
MODULATION

Art. N°: M279
RRP CHF 176.00

- Delivers uniquely expressive vintage phaser tones with the impeccable build quality + tweakability that MXR is famous for.
- Unique vintage voice
- Offers a wide range of phase tones, from subtle liquid shifting to thick, swirling turbulence
- Half the footprint of a standard MXR pedal



PHASE 95 MINI
MODULATION

Art. N°: M290EU
RRP CHF 130.00

- Combines MXR's most iconic phase circuits in a single mini housing
- Half the footprint of a standard MXR pedal
- 45/90 switch toggles between Phase 45 and Phase 90 circuits
- Script removes feedback for a subtler vintage sound
- ECB-03E 9-volt adapter included



CARBON COPY® DLX ANALOG DELAY
MODULATION

Art. N°: M292
RRP CHF 270.00

- Tap Tempo function synchronizes delay time to song tempo.
- 4 different Tap Tempo subdivisions
- Modulation switch adds character and texture to repeats.
- Bright switch engages vibrant, articulate Carbon Copy Bright sound.
- Programmable presets for easy recall of your favorite settings.



CARBON COPY® MINI ANALOG DELAY
MODULATION

Art. N°: M299
RRP CHF 200.00

- Get the Carbon Copy Delay's analog warmth and ease of use in an MXR mini housing
- Bright switch increases tonal versatility, adding sparkle and clarity to repeats
- Switchable mod section goes from tape echo warble to shimmering chorusing
- Perfect for freeing up space or putting a travel board together
- Includes ECB003 9V adapter



REVERB
MODULATION

Art. N°: M300-EU
RRP CHF 259.00

- Six meticulously crafted reverbs in one pedal
- Audiophile quality analog and digital audio paths—dry path is 100% analog
- Studio-grade low noise floor
- Trails Bypass mode lets effect ring out after turning the pedal off
- Expression pedal jack for foot control of all knob settings
- Stereo In/Out capability when using TRS cables (not included)



TREMOLO
MODULATION

Art. N°: M305G1
RRP CHF 200.00

- Get all of the most beloved tremolo sounds in a single pedal
- Six masterfully tuned styles: MXR, Bias, Reverse Optic, Optic, Square Wave, & Harmonic
- Speed, Gain, Depth controls for easy out-of-the-box operation
- Advanced features include stereo, tap tempo, expression, & envelope tremolo modes
- Put a wide variety of tremolo sounds on your board without overcrowding it



LAYERS
MODULATION

Art. N°: M307
RRP CHF 299.00

- Extend the creative potential of your instrument with rich, organic sustain
- Versatile suite of controls opens new frontiers to plug-and-play maestros & tonal tinkerers alike
- Up to three layers of sustain, each with its own status LED
- Trigger layers with footswitch or playing dynamics
- The Mix knob adjusts the wet signal level; in other words, the volume of your layers
- Trig knob sets the sensitivity of auto-trigger function



NEW

**JOSHUA®
AMBIENT ECHO
MODULATION**

**Art. N°: M309G1
RRP CHF 279.00**

- Dive into iconic soundscapes
- Highly customizable echoes
- Onboard tap tempo and off-board switching
- Hold mode and other advanced features



**MICRO AMP
Boost**

**Art. N°: M133
RRP CHF 118.00**

- Up to +26dB of gain
- Perfect for switching between guitars with unmatched output
- Great for use with long signal chains or anytime signal drop-off is a problem



**MICRO AMP PLUS
Boost**

**Art. N°: M233
RRP CHF 165.00**

- Up to +26dB clean boost
- Specially-tuned Bass and Treble controls for fine tonal shaping
- Low-noise circuitry
- True bypass switching
- Sounds great on bass as well as guitar



**BOOSTER MINI
Boost**

**Art. N°: M293
RRP CHF 141.00**

- Get the Echoplex Preamp's saucy mojo with the Micro Amp's boosting power
- Pedalboard-friendly lightweight housing
- Volume control boosts signal up to +25dB
- Internal Echoplex Preamp level control adds a little extra grit to your signal



**10 BAND GRAPHIC
EQUALIZER**

**Art. N°: M108SEU
RRP CHF 176.00**

- Cut or boost 10 different frequencies up to ±12dB
- LEDs provide high visibility, even in direct sunlight
- 18-volt operation for increased headroom
- 2 outputs for running 2 separate signal chains
- Low noise floor
- True bypass switching



**6 BAND GRAPHIC
EQUALIZER**

**Art. N°: M109S
RRP CHF 141.00**

- Cut or boost six different frequencies up to ±18dB
- LEDs provide high visibility, even in direct sunlight
- Low noise floor
- True bypass switching



SMART GATE PRO

**Art. N°: M235
RRP CHF 587.00**

- Precise, intelligent noise reduction
- Three selectable ranges per channel for any type of sound source
- Two discrete channels that can be linked to quiet a stereo signal
- True hardware-bypass outputs on each channel
- Remote switching capabilities



SMART GATE

Art. N°: M135
RRP CHF 176.00

- Three selectable noise reduction ranges
- Reacts gradually to long, sustained notes and quickly to short, syncopated notes
- Fast attack time preserves picking transients and harmonic overtones



NOISE CLAMP GATE

Art. N°: M195
RRP CHF 141.00

- Eliminates hiss and excess noise from your effects chain
- A single Trigger knob sets the volume threshold
- Capable of reducing noise up to +26 dB
- Maintains riff definition at extreme gain levels



STUDIO COMPRESSOR

Art. N°: M76
RRP CHF 235.00

- Classic studio compressor in a Phase 90-sized pedal
- CHT™ Constant Headroom Technology for clear, clean performance
- Ten Gain-reduction status LEDs
- True bypass



DYNA COMP COMPRESSOR

Art. N°: M102
RRP CHF 118.00

- In-line compressor “evens out” the signal to your amplifier
- Useful for increased sustain with stable dynamics
- Nashville studio standard



SUPER COMP COMPRESSOR

Art. N°: M132
RRP CHF 141.00

- Classic Dyna Comp® style compression
- Attack Level control preserves attack volume without sacrificing sustain
- Compatible with the hottest pickups



DYNA COMP DELUXE COMPRESSOR

Art. N°: M228
RRP CHF 165.00

- Classic CA3080 “metal can” integrated circuit provides quieter operation, greater transparency, and increased dynamic range
- Clean control blends unaffected signal with compressed signal for optimal balance
- Tone control allows for further refinement of the compressed signal
- Attack switch toggles between slow and fast attack times



DYNA COMP MINI COMPRESSOR

Art. N°: M291
RRP CHF 130.00

- Classic MXR compression in a space-saving mini housing
- Features rare CA3080 “metal can” IC for quieter operation, greater transparency, and increased dynamic range
- All-new Attack switch toggles between slow and fast attack times



CLONE LOOPER

Art. N°: M303G1
RRP CHF 176.00

- Incredible sound quality
- Just plug in, power up, and start recording an unlimited number of layers—up to 6 minutes long—that will be stored even when the pedal is off.
- Changing up the speed of your loop—to double-speed (3 minutes of recording time) or half-speed (12 minutes)—to reversing it entirely
- Provides further external control options when you connect a DVP volume pedal to adjust the loop’s output level or an Tap Tempo Switch to engage Play Loop Once mode



A/B BOX
UTILITY

Art. N°: M196
RRP CHF 94.00

- Routes instrument signal to two separate output paths
- Select between two separate signal paths or run both at the same time
- Thru jack allows you to connect to a tuner or amp that receives a constant signal from your guitar, unaffected by the A/B switches
- Output jacks are terminated to ground in bypass
- True bypass switching



TAP TEMPO
UTILITY

Art. N°: M199
RRP CHF 47.00

- Adjustable tip/ring configuration
- Ruggedly built, road-ready construction
- Can be used with a variety of pedal types



TRS SPLIT + TAP
UTILITY

Art. N°: M231
RRP CHF 69.00

- Compact footswitch that combines a passive TRS splitter with a responsive tap tempo control
- TRS input and Left and Right outputs, all passive, allowing you to split your TRS signal to mono L/R paths or combine stereo L/R paths into a TRS path.
- The Split + Tap also allows you to adjust the timing of your effects or toggle their parameters on the fly with a momentary switch that responds quickly to your touch



DC BRICK™ POWER SUPPLY
UTILITY

Art. N°: M237
RRP CHF 118.00

- Powers eight 9V pedals and two 18V pedals all at once without sacrificing signal integrity
- Features eight red LEDs to clearly indicate short-circuited pedals
- Includes AC adapter + all necessary cables to connect pedals to the unit



ISO-BRICK POWER SUPPLY
UTILITY

Art. N°: M238
RRP CHF 200.00

- Pedalboard-friendly size
- 10 fully-isolated outputs
- Quiet, noise-free operation
- Powers a wide range of pedal types—digital and analog, positive and negative ground
- (2) 9V outputs @ 100mA, (2) 9V @ 300mA, (2) 9V @ 450mA, (2) 18V @ 250mA, and (2) variable outputs adjustable from 6V to 15V @ 250mA
- On/off + connection status LEDs



MINI ISO-BRICK™ POWER SUPPLY
UTILITY

Art. N°: M239
RRP CHF 118.00

- 5 outputs, and each is fully isolated to eliminate obnoxious, gig-ending ground loop noise.
- 4 of the outputs supply 9 volts of power at 300mA, while a fifth can be set to provide either 9 volts or 18 volts at 800mA depending on your needs.



ISO-BRICK™ PRO POWER SUPPLY
UTILITY

Art. N°: M242
RRP CHF 249.00

- Clean, steady voltages
- Powers wide range of pedals
- Fits popular pedalboards
- 10 fully isolated outputs
- IEC power input



**HYBRID FUZZ
DISTORTION**

Art. N°: CSP041
RRP CHF 200.00

- Combines snarling high-gain silicon and the shaggy warmth of germanium
- Broad range of tones with a simple two-knob interface
- Go from searing psychedelica to high-desert grindage
- Highly responsive to your guitar's volume control
- Draped in a super tripped out finish courtesy of design studio One Horse Town



**TIMMY
OVERDRIVE**

Art. N°: CSP027
RRP CHF 176.00

- Designed with veteran Nashville pedal builder Paul Cochrane
- Provides a huge range of overdrive tones in a mini housing
- Choose from 3 different clipping styles to cover a multitude of situations
- Dial in a big, bold sound that's always on, a super saturated sound for fat chords, and more



**GRAN TORINO
OVERDRIVE / BOOST**

Art. N°: CSP033G
RRP CHF 169.00

- Recreates classic tube tones
- MOSFET technology
- Dynamic boost with natural compression
- Limited edition



**RAIJIN DRIVE
OVERDRIVE**

Art. N°: CSP037
RRP CHF 176.00

- 2nd collab. between Shin Suzuki and the MXR Custom Shop.
- Reinvents iconic Japanese overdrive and distortion with greater tonal range and usability.
- Switch between the two signals with the flip of a switch.
- Each is designed to complement the voice of your instrument.
- Straightforward yet highly responsive control setup for quickly dialing in great sounds.



**DUKE OF TONE
OVERDRIVE**

Art. N°: CSP039
RRP CHF 179.00

- Collab. MXR & Analog Man.
- Adds warmth & grit while allowing the sound and feel of your high-end gear to shine.
- Thru-hole components personally tested by Analog Mike.
- Boost/OD/Disto. switch allows you to set the overall attitude of the pedal's output.
- Stack it with other gain pedals for creatively crunchy results.
- Allows all of your signal chain's nuances to come through, from strings to amp tubes.



**MXR X THIRD
MAN HARDWARE
DOUBLE DOWN**

Art. N°: CSP042
RRP CHF 200.00

- 2 Micro Amps in a single pedal.
- Splits your signal to 2 separate outputs, each with its own Gain control for up to +26dB of signal-boosting Phase switch adds a pronounced stereophonic effect by inverting the phase of the second output signal.
- Buffer switch to choose between true bypass and buffered bypass switching.
- Double boost your double stack



**'74 VINTAGE
PHASE 90
MODULATION**

Art. N°: CSP026
RRP CHF 176.00

- Hand-wired circuit board built with original-spec 1974 components
- Original high-quality Switchcraft Input/Output jacks and Carling bypass switch
- Hand-selected FETs, matched to produce deep and rich phasing
- All analog circuitry for warm analog tone



**SCRIPT PHASE 90
WITH LED
MODULATION**

Art. N°: CSP101SL
RRP CHF 153.00

- Defined the classic phase shifter sound, and was heard on everything from hard rock to jazz-fusion to funk hits
- Headroom and clarity of the original, ultra-warm and smooth phasing and reduced midrange swell
- Power: Dunlop ECB-03E AC adapter or single 9 volt battery.



SCRIPT DYNA COMP® WITH LED COMPRESSOR

Art. N°: CSP102SL
RRP CHF 176.00

- Combines old school sound with modern conveniences
- Spec'd from 1976 unit
- Features rare CA3080 "metal can" IC for quieter operation, greater transparency, and increased dynamic range
- Updated with bypass status LED and AC power jack



DIME DISTORTION

Art. N°: DD-11
RRP CHF 180.00

- Aggressive, tight and focused distortion
- 3-band EQ
- Scoop switch to cut mids



DOOKIE™ DRIVE III OVERDRIVE

Art. N°: DD25V3
RRP CHF 223.00

- Get the dirty, punchy overdrive sound that Billie Joe Armstrong used on Green Day's Dookie
- Captures the tones of both of Billie Joe's custom amplifiers in a single pedal
- High Gain section supplies tons of scooped gain - Crunch Gain section serves up a well-defined midrange
- Blend the 2 sounds together just like Green Day did in the studio
- Limited edition artwork celebrates the "The Father of All..." record



DOOKIE™ DRIVE IV OVERDRIVE

Art. N°: DD25V4
RRP CHF 233.00

- Get the dirty, punchy overdrive sound that Billie Joe Armstrong used on Green Day's Dookie
- Captures the tones of both of Billie Joe's custom amplifiers in a single pedal
- High Gain section supplies tons of scooped gain - Crunch Gain section serves up a well-defined midrange
- Blend the 2 sounds together just like Green Day did in the studio
- Limited edition artwork celebrates the "The Father of All..." record



RAW DAWG ERIC GALES SIGNATURE OVERDRIVE

Art. N°: EG74
RRP CHF 141.00

- This pedal is based on a classic OD famous for its grit and crunch-but we balanced out the midrange and bumped up the gain for a sweeter, more natural sound even when cranked
- Classic circuit customized for balanced midrange and higher gain
- Simple three-knob interface
- Mini housing for ultimate pedal-board convenience



EDDIE VAN HALEN 5150 CHORUS MODULATION

Art. N°: EVH-30
RRP CHF 235.00

- Captures Eddie's early '80s chorus sound
- Input & Output Level switches to optimize signal-to-noise performance + achieve unity throughput gain
- Volume, Tone, & Intensity controls
- Internal True/Buffered Bypass switch
- Mono and Stereo outputs
- **Limited to 15pcs. in Switzerland**



PHASE 90 EDDIE VAN HALEN MODULATION

Art. N°: EVH-90
RRP CHF 164.00

- Deep, rich phasing
- Script switch toggles between old school and modern phase sounds
- Custom EVH paint job



FLANGER EDDIE VAN HALEN MODULATION

Art. N°: EVH-117
RRP CHF 235.00

- Four different parameters for precise fine-tuning
- EVH switch engages "Unchained" flanger tone
- Custom EVH paint job



OVERDRIVE EDDIE VAN HALEN

Art. N°: EVH-5150
RRP CHF 235.00

- Designed in close collaboration with Eddie Van Halen
- Delivers a full range of powerful saturation via multi-stage MOS-FETs
- Features 3-band EQ section for versatile tweakability and a Boost switch to add extra gain and compression
- Gate control tames unwanted noise
- Sounds great through a wide variety of amps and speaker cabs



'68 SHRINE, FUZZ FACE DISTORTION

Art. N°: JHMS1
RRP CHF 176.00

- This special edition of the Fuzz Face Distortion pays tribute to the legendary Jimi Hendrix with a custom finish that remixes prolific and celebrated rock artist John Van Hamserveld's famous 1968 Shrine Auditorium concert poster art.
- Licks of green and blue flame evoke the fiery passion and metaphysical musical experience that Jimi Hendrix gave to the world while psychedelic lettering captures the vibe of the era.



'68 SHRINE OCTAVO FUZZ

Art. N°: JHMS2
RRP CHF 176.00

- This special edition of the Octavo Fuzz pays tribute to the legendary Jimi Hendrix with a custom finish that remixes prolific and celebrated rock artist John Van Hamserveld's famous 1968 Shrine Auditorium concert poster art.
- Wings soar above a psychedelic landscape, evoking the musical journey that Jimi Hendrix's work takes us on—from solid ground to high in the sky.



'68 SHRINE UNI-VIBE CHORUS/VIBRATO

Art. N°: JHMS3
RRP CHF 176.00

- This special edition of the Uni-Vibe Chorus/Vibrato pays tribute to the legendary Jimi Hendrix with a custom finish that remixes prolific and celebrated rock artist John Van Hamserveld's famous 1968 Shrine Auditorium concert poster art.
- Star-spangled embellishments & psychedelic lettering highlight the explosive contribution of Jimi Hendrix and the mind-bending mojo of that historical moment.



'68 SHRINE BAND OF GYPSYS FUZZ

Art. N°: JHMS4
RRP CHF 176.00

- This special edition of the Band of Gypsies Fuzz pays tribute to the legendary Jimi Hendrix with a custom finish that remixes prolific and celebrated rock artist John Van Hamserveld's famous 1968 Shrine Auditorium concert poster art
- A buzzsaw starburst, peaceful sunflowers, and psychedelic lettering awash in warm, vibrant colors highlight the magic of contrasting forces.



RANDY RHOADS DISTORTION +

Art. N°: RR104
RRP CHF 229.00

- Dunlop celebrate Randy Rhoads monumental legacy with this recreation of his own MXR Distortion+.
- The engineers painstakingly spec'd Randy's vintage Distortion+, with the direct involvement of sister Kathy Rhoads, and created this signature model to produce the same overdriven tones heard on Randy's most beloved hits. Comes with a custom finish inspired by Randy's legendary Flying V guitar.
- Limited edition pedal features an exclusive booklet and certificate of authenticity.



SLASH OCTAVO FUZZ

Art. N°: SF01
RRP CHF 200.00

- Three different effects to thicken up your tone
- Sub-octave growl
- Thick '70s shag fuzz
- Psychedelic Octavo Up fuzz



TOM MORELLO POWER 50 OVERDRIVE

Art. N°: TBM1
RRP CHF 235.00

- Captures the sound + functionality of Tom's setup for use with any rig, whether you have a simple combo amp or a high-end custom stack
- Authentic amp tones recreated from the ground up
- A full range of controls taken right from the amp
- Its own FX loop taps into the raw signal-clipping point prior to the Presence control and the custom tone-shaping at the output



**WYLDE AUDIO
OVERDRIVE**

Art. N°: WA44
RRP CHF 159.00

- Custom built for Zakk's loud, tough, & relentless riffs and leads
- This muscular stomp box will transform your amp into a heavy, chunky crunch machine
- With a simple Output, Tone, and Gain control layout, setup is fast and easy so that you can concentrate on the important business at hand—kicking major sonic ass



**WYLDE AUDIO
CHORUS**

Art. N°: WA38
RRP CHF 179.00

- Zakk's secret weapon for thickening up walls of distortion and adding liquid dimension and texture to clean passages
- Rich vintage-style analog tones, which can be dialed in with High and Low cut filters and Level, Rate, and Depth controls
- Hook up two amps via the two outputs for a wide and sweeping stereo spread



**WYLDE AUDIO
PHASE**

Art. N°: WA90
RRP CHF 149.00

- Adds dimension and dynamics to Zakk's legendarily blazing solos and razor sharp leads—all with the twist of a single Rate knob
- Take it from a slow grind to a jack hammering pulse, or use it as Zakk does, at the 9 o'clock position for a slow burning sweep



**YNGWIE
MALMSTEEN
OVERDRIVE**

Art. N°: YJM308
RRP CHF 179.00

- Working closely alongside Yngwie, the MXR design team created a circuit that delivers clarity, expressive dynamics, and rich harmonics
- The control setup is simple, with just Level and Gain knobs, but every adjustment you make will have a profound impact.
- Will boost every nuance you impart with your laser-focused leads and gigantic riffs.

WAY HUGE
ELECTRONICS



**SMALLS SWOLLEN
PICKLE JUMBO
FUZZ MKIII**

Art. N°: WM41
RRP CHF 176.00

- Super saturated Swollen Pickle Fuzz in a more pedalboard-friendly form than ever
- Toggle midrange scoop or compression intensity with the flip of a switch
- Dial in a potent fuzz sound in no time with a simple three-knob interface



**SMALLS STONE
BURNER SUB
ATOMIC FUZZ**

Art. N°: WM81
RRP CHF 200.00

- Will put you in touch with your freaky side
- The fuzz and sub octave signals each have their own level knobs so that you can mix the two to your own twisted taste. The Sub 1/Sub 2 switch lets you choose just how low your dirty deeds can go. Volume and Tone controls round out this pedal's insidious interface.



**SMALLS CONSPIRA-
CY THEORY
OVERDRIVE**

Art. N°: WM20
RRP CHF 176.00

- Based on a mysterious mythical overdrive circuit
- Maintains voice of your instrument
- Blends clean signal with for smooth, transparent tones
- Increased headroom for dynamic, wide open sound
- Simple three-knob interface
- True bypass switching



**SMALLS GREEN
RHINO OVERDRIVE**

Art. N°: WM22
RRP CHF 176.00

- Unleashes a stampede of gnarly, gritty tones that rivals its larger companions'
- With this level of versatility, you can take any amp from pristine to punchy, from dirty to thunderous.
- This pedal will have your amp showing a whole new side of it-self.



**SMALLS RED LLAMA
OVERDRIVE MKIII**

Art. N°: WM23
RRP CHF 176.00

- Celebrate the 30th anniversary of Way Huge with its very first pedal—the Red Llama Overdrive.
- Now in the compact Smalls enclosure with all the sensitivity and mojo of the original.
- Delicious harmonic overdrive from soft and cuddly to burly and brutal.
- The iconic Red Llama Overdrive is back—and more compact than ever!



**SMALLS STO
"SUPER TERRIFIC
OVERDRIVE"**

Art. N°: WM25
RRP CHF 185.00

- Delivers smooth, silky overdrive that sounds like the purr of a freshly tuned-up muscle car
- It simple three-knob setup offers just about the fastest and easiest ride to overdriven paradise.
- The Drive knob deserves special recognition—its range is wide and responsive and makes it sound like your amp is breaking up of its own natural accord but without any more volume than you need



**SMALLS SUPA-LEAD
OVERDRIVE**

Art. N°: WM31
RRP CHF 176.00

- Dynamic, touch-sensitive overdrive that's super responsive to your guitar's volume control
- Designed to get crunchy tones from a clean or slightly dirty amp
- Produces a focused midrange grind with tons of volume



**SMALLS™ GEISHA
DRIVE**

Art. N°: WM32
RRP CHF 199.00

- Dynamic, touch-sensitive tones
- Simple three-knob control setup
- Special limited edition offering



**SMALLS BLUE
HIPPO ANALOG
CHORUS**

Art. N°: WM61
RRP CHF 200.00

- Same lusciously liquefied sounds in a more pedalboard-friendly package
- Take it from lush tone-widening to full-on rotating speaker madness
- Vibe switch adds thick vibrato texture



**SMALLS AQUA-
PUSS ANALOG
DELAY**

Art. N°: WM71
RRP CHF 200.00

- Same bright, jangly sound in a more pedalboard-friendly package
- Perfect for tone-thickening and old school slap-back delay
- All-analog signal path
- Simple three-knob interface



**SMALLS ATTACK
VECTOR PHASER &
ENVELOPE**

Art. N°: WM92
RRP CHF 235.00

- Combines phase shifter and envelope filter in a compact housing.
- Fifty shades of rude behavior to twist your riffs into crazy new forms.
- Go from funky peaks to gloopy twang.



**SAUCY BOX
HIGHLY VERSATILE
OVERDRIVE**

Art. N°: WHE205
RRP CHF 153.00

- This pedal forgoes individual clean and drive controls and automatically balances the optimum ratio of the two with a single Gain control.
- This unique design provides for everything from pure a unity-gain buffer to a clean boost & all the way to a salaciously buttery overdrive.
- To top it all off, this pedal has a passive tone circuit that will play nice with any pickup type.



OVERDRIVE

Art. N°: WHE2050D
RRP CHF 153.00

- The illustrious Saucy Box Overdrive in a shiny new skin.
- Unparalleled versatility from discrete clean and overdrive signal paths.
- Organic sound that's dynamic and finger-friendly.
- Plug-and-play simplicity.
- Passive tone control circuit for creating a smooth, round sound



GREEN RHINO OVERDRIVE MKIV

Art. N°: WHE207
RRP CHF 176.00

- Smaller and more compact with more force than ever
- Volume, Tone, and Drive controls of the original
- 100Hz control from the MkII cuts or boosts lows by 12dB
- All-new 500Hz control cuts or boosts mids by 12dB
- Classic switch reverts to original 3-knob setup for fast access to the classic Green Rhino Overdrive sound



PURPLE PLATYPUS™ OCTIDRIVE

Art. N°: WHE800
RRP CHF 185.00

- Combines the burly, buttery tones and amp-clobbering gain of the Red Llama Overdrive with a frequency doubler that creates an octave-up effect that will take you all the way from eerie ring modulator style effects to downright massive octave fuzz.



SWOLLEN PICKLE™ JUMBO FUZZ MKIIS

Art. N°: WHE401S
RRP CHF 176.00

- Smaller, more pedalboard-friendly housing
- Take your signal from mild crunch to high gain Armageddon
- Scoop, Crunch, and internal Voice and Clip controls for fine-tuning fuzz sound



ECHO-PUSS ANALOG DELAY

Art. N°: WHE702S
RRP CHF 193.00

- Organic analog delay pedal
- Features a simple user interface to fine tune your repeats
- Serves up 600ms of delay time
- Powered by gravel-voiced bucket-brigade chips
- Add liquid textures with a fully tweakable LFO circuit



SUPA-PUSS™ ANALOG DELAY

Art. N°: WHE707
RRP CHF 317.00

- Features bountiful delay time & fine control over your repeats
- Six bucket-brigade chips deliver up to 900 milliseconds of delay time
- Programmable up to 3 full secs. with Tap Tempo switch
- Subdivision control
- Chase mode cycles repeats through each of the subdivision values for maximum freak-out effects
- Tone, Gain, Speed, Depth controls
- Mix control blends wet and dry signals to your taste
- Expression pedal jack



ATREIDES ANALOG WEIRIDING MODULE

Art. N°: WHE900
RRP CHF 235.00

- Inspired by a vintage mini synth pedal
- A single effect with many layers
- Sub, envelope, fuzz, and phase sounds
- Sliders adjust each parameter
- Internal switch sets sub at 1 or 2 octaves down
- Internal pot adjusts phaser feedback
- **LIMITED EDITION**



EVOLUTION ORANGE UNDERDRIVE

Art. N°: MP-EOU
RRP CHF 129.00

Evolution Orange Underdrive (EOU) offers a new way to approach your tone. Instead of overdriving your clean tone, now you can get cleaner tones from your favorite overdriven tone. That is what we call underdriving. It works by lowering the midrange as that is where the overdrive mostly is. EOU can also be used to boost the midrange by setting the midrange and volume up.



ROYAL BLUE OVERDRIVE

Art. N°: MP-RBO
RRP CHF 169.00

The Royal Blue Overdrive is an extremely touch sensitive overdrive. It offers a really wide range of dirt from clean boost/EQ to distortion. Filtering is limited on the overdrive to provide transparent tone that you can tailor with the Treble and Bass knobs. It lets you determine the amount of breakup by how hard you strike the strings with your pick, and/or by adjusting the volume knob on your guitar.



THE GREEN WONDER

Art. N°: MP-TGW
RRP CHF 189.00

The Green Wonder is a versatile high headroom overdrive/booster pedal, that has high output and sounds great with both single coil and humbucking pickups. It works extremely well with different kinds of amplifiers and can be used with both clean and overdrive channels, even with heavy distortion. Also ideal also for players seeking a pedal to stack with other pedals!



SWEET HONEY OVERDRIVE

Art. N°: MP-SHO
RRP CHF 189.00

The Green Wonder is a versatile high headroom overdrive/booster pedal, that has high output and sounds great with both single coil and humbucking pickups. It works extremely well with different kinds of amplifiers and can be used with both clean and overdrive channels, even with heavy distortion. Also ideal also for players seeking a pedal to stack with other pedals!



DEEP BLUE DELAY

Art. N°: MP-DBD
RRP CHF 189.00

A natural sounding digital/analog delay, with an analog direct signal path. It is voiced after a classic tape echo and can be used either in front of an amplifier or in an effects loop. The pedal is specially designed to work well with distorted tones, as this is the most critical application. A ambience delay who gives a tuned resonance that doesn't need to be on the beat to sound good.



SNOW WHITE AUTO WAH GB

Art. N°: MP-SAW
RRP CHF 189.00

Tuned like a real wah. It has very fast tracking and accuracy rarely found auto wahs/envelope filters. Also the pedal has a unique decay control for the filter frequency fall speed. You can set it to be fast for wah effects on every note or slower for a more traditional wah sound. By experimenting with the four knobs you can find a lot of different tones suitable for your guitar and playing style.



SILVER SPRING REVERB

Art. N°: MP-SSR
RRP CHF 189.00

Big reverb in a small box! Mad Professor has captured the beautiful and sought after sound of a huge and bulky tube tank spring reverb and put it in a small box under the name Silver Spring Reverb. Compact, very easy to use digital/analog-reverb with a pure analog direct signal path. It creates a natural sounding ambient reverb that will not get in the way of your original signal.



FORREST GREEN COMPRESSOR

Art. N°: MP-FGC
RRP CHF 189.00

A high quality compressor pedal for guitar and bass. Extremely low noise throughout the range and also minimum distortion even with the wide dynamic input range. Switchable compressor and sustainer mode. In sustain mode the attack is preserved and this is great when you need a dynamic and touch sensitive tone with a long sustain. Compressor mode is like a standard compression.



SUPER BLACK



SUPREME MATT SCHOFIELD

Art. N°: MP-SB
RRP CHF 249.00

Art. N°: MP-SMS
RRP CHF 269.00

The vintage Fender tone in a box! The whole amp signal path is replicated inside. You can turn your amplifier easily into 60's Fender glory! You can plug the Super Black pedal in front of your amp or also into the return jack of your amp's FX loop. This way you can bypass the preamp of your amp and get the sound of a full Blackface amp signal path without the color of your amps preamp.

The pedal is called Supreme because it simply excels in both tone and functionality. Supreme was born in collaboration with the world famous tone connoisseur Matt Schofield. Matt was looking after the best guitar overdrive tones possible and a specific functionality: two pedals in one, switching from one side to the other with just a single press on the switch.





ENGINE ROOM POWER SUPPLY LVL5

Art. N°: 023-0106-005
RRP CHF 135.50

- 5 ground isolated outputs each capable of 9Vdc @ 500mA
- Global mains input voltage (100-240Vac) 50/60Hz for use anywhere in the world
- Standard IEC mains voltage connector
- Dimensions: Length 85 mm (3.346 in); Width 130 mm (5.118 in); Height 42 mm (1.654 in)
- Cable kit included



ENGINE ROOM POWER SUPPLY LVL8

Art. N°: 023-0106-008
RRP CHF 229.50

- 8 ground isolated outputs – 6 outlets fixed 9Vdc at 500mA and 2 outlets with switchable voltage (9v/12v/18v)
- Global mains input voltage (100-240Vac) 50/60Hz for use anywhere in the world
- Standard IEC mains voltage connector
- Dimensions: Length 214 mm (8.425 in); Width 90 mm (3.543 in); Height 42 mm (1.654 in)
- 5V USB-A and USBC output for charging smart devices
- Cable kit included



ENGINE ROOM POWER SUPPLY LVL12

Art. N°: 023-0106-012
RRP CHF 282.50

- 12 ground isolated outputs – 10 outlets fixed 9Vdc at 500mA and 2 outlets with switchable voltage (9v/12v/18v)
- Global mains input voltage (100-240Vac) 50/60Hz for use anywhere in the world
- Standard IEC mains voltage connector
- Dimensions: Length 282 mm (11.102 in); Width 90 mm (3.543 in); Height 42 mm (1.654 in)
- 5V USB-A and USBC output for charging smart devices
- Cable kit included



PUGILIST DISTORTION

Art. N°: 023-4534-000
RRP CHF 129.00

- Dual gain engines
- Discrete tone controls per channel
- LED backlit knobs
- Magnetically latched hinged 9V battery door
- Lightweight durable anodized aluminum construction



DUEL PUGILIST DISTORTION

Art. N°: 023-4562-000
RRP CHF 229.50

- 2 independent distortion circuits
- Series and parallel options
- Master two-band EQ
- True-bypass and all analog
- LED backlit knobs
- Lightweight durable anodized aluminum construction



FULL MOON DISTORTION

Art. N°: 023-4537-000
RRP CHF 204.00

- High-gain distortion effect pedal
- Onboard 3-Band EQ; Texture and Bite switches
- Up to 12dB switchable Boost
- Magnetically latched hinged 9V battery door
- LED-backlit knobs; Fender Amp Jewel LED



MTG TUBE DISTORTION

Art. N°: 023-4539-000
RRP CHF 219.00

- Real tube-driven distortion pedal NOS 6205 preamp tube
- 3-Band EQ; Boost with Gain and Level controls
- LED-backlit knobs; Fender Amp Jewel LED
- Standard 9VDC center-negative power connection



MTG : LA® TUBE DISTORTION

Art. N°: 023-4547-000
RRP CHF 219.50

- Tube distortion pedal
- NOS 6205 preamp tube
- 3-Band EQ
- Boost with Gain & Level controls
- Global Tight control



COMPUGILIST COMPRESSOR/DISTORTION

Art. N°: 023-4551-000
RRP CHF 189.00

- Compression/distortion pedal
- All-analog design
- Independently switchable
- Bass Boost
- Stage-ready construction



THE PELT FUZZ

Art. N°: 023-4542-000
RRP CHF 139.00

- Silicon fuzz effect pedal
- Mid and Thick voicing switches
- LED-backlit knobs; Fender Amp Jewel LED
- Magnetically latched hinged 9V battery door
- Lightweight durable anodized aluminum construction



THE TRAPPER DUAL FUZZ

Art. N°: 023-4545-000
RRP CHF 189.00

- Dual fuzz effect pedal
- Two discrete fuzz voices
- Switchable high octave
- Interactive noise gate
- Global Tone and Contour controls



SANTA ANA OVERDRIVE

Art. N°: 023-4533-000
RRP CHF 240.50

- FET technology for tube-like performance
- 'A' and 'B' overdrive voicings
- LED backlit knobs
- Fender Amp Jewel LED
- Magnetically latched hinged 9V battery door
- Lightweight durable anodized aluminum construction



LOST HIGHWAY PHASER

Art. N°: 023-4544-000
RRP CHF 167.00

- Analog 4- & 8-stage phaser pedal
- Slow/Fast with independent Rate and Depth controls
- Blend and Feedback controls
- Sine and Triangle waveforms
- Dynamically responsive modulation rate



TREAD-LIGHT WAH PEDAL

Art. N°: 023-4555-000
RRP CHF 114.50

- Analog Wah Pedal
- Adjustable 3-Way frequency selector
- Switchable under-treadle LED
- Switchable Internal Buffer/Treadle torque is adjustable for comfort
- Power with 9V battery or center negative AC adapter (not included)



TREAD-LIGHT VOLUME/EXPRESSION PEDAL

Art. N°: 023-4556-000
RRP CHF 114.50

- Analog Volume/Expression pedal
- Top mounted jacks
- Switchable under-treadle LED
- Treadle torque is adjustable for comfort
- Expression output requires 1/4" TRS cable
- 9-Volt Battery or Center Negative AC Adapter (not included)



ENGAGER BOOST

Art. N°: 023-4536-000
RRP CHF 126.00

- Clean Boost effect pedal
- Onboard 3-Band EQ; true or buffered bypass
- LED-backlit knobs; Fender Amp Jewel LED
- Magnetically latched hinged 9V battery door
- Lightweight durable anodized aluminum construction



THE BEND COMPRESSOR

Art. N°: 023-4531-000
RRP CHF 129.00

- Dual internal audio paths for low noise
- High-current symmetrical control path for fast response time
- LED backlit knobs
- Fender Amp Jewel LED
- Magnetically latched hinged 9V battery door
- Lightweight durable anodized aluminum construction



LEVEL SET BUFFER

Art. N°: 023-4530-000
RRP CHF 119.00

- Level and Hi-Freq trim controls
- Main Mute footswitch for silent tuning
- LED backlit knobs
- Fender Amp Jewel LED
- Magnetically latched hinged 9V battery door
- Lightweight durable anodized aluminum construction



LAYER REVERB

Art. N°: 023-4532-000
RRP CHF 189.00

- Hall, Room and Shimmer reverb types
- Reverb tails continue when effect is muted
- LED backlit knobs
- Fender Amp Jewel LED
- Magnetically latched hinged 9V battery door
- Lightweight durable anodized aluminum construction



MIRROR IMAGE DELAY

Art. N°: 023-4535-000
RRP CHF 177.50

- Digital, Analog and Tape delay types
- Option to add dotted-eighth note
- LED backlit knobs
- Magnetically latched hinged 9V battery door
- Lightweight durable anodized aluminum construction



BUBBLER ANALOG CHORUS/VIBRATO

Art. N°: 023-4540-000
RRP CHF 167.00

- Analog chorus pedal
- Slow/Fast with independent Rate and Depth controls
- Sine and Triangle waveforms
- Dynamically responsive modulation rate
- Stereo outputs



TRE-VERB DIGITAL REVERB/TREMOLO

Art. N°: 023-4541-000
RRP CHF 279.00

- Tremolo and reverb pedal
- Independent Tremolo and Reverb effects with three voices each
- Tap Tempo for Tremolo rate
- Stereo inputs and outputs
- LED-backlit knobs



THE PINWHEEL ROTARY SPEAKER EMULATOR

Art. N°: 023-4543-000
RRP CHF 275.00

- Rotary speaker pedal
- Switchable Slow/Fast speeds
- Onboard overdrive; dynamically responsive modulation rate
- Stereo inputs and outputs
- Selectable guitar and keyboard voicings



**REFLECTING POOL
DELAY/REVERB**

Art. N°: 023-4546-000
RRP CHF 335.00

- Delay/reverb effect pedal
- Time, Variation & Quality Controls
- Dedicated Tap Tempo footswitch
- Stereo inputs and outputs



**ACOUSTIC
PREAMP/PREVERB**

Art. N°: 023-4548-000
RRP CHF 204.00

- Digital Reverb with three unique settings
- High-fidelity Preamp
- Anti-feedback Notch Filter
- Tilt EQ Control
- LED backlit knobs
- Lightweight durable anodized aluminum construction



**POUR OVER
ENVELOPE FILTER**

Art. N°: 023-4549-000
RRP CHF 195.00

- Envelope filter pedal
- Onboard distortion
- High-, Low- & Band-Pass filters
- Sweep direction control
- Magnetically latched hinged 9V battery door
- Amp jewel LED



**MTG TUBE
TREMLO**

Art. N°: 023-4554-000
RRP CHF 209.00

- Analog Tube Tremolo
- NOS 6205 preamp tube
- Tap tempo
- Powered via 9V adaptor (not included)



**DUAL MARINE
LAYER REVERB**

Art. N°: 023-4563-000
RRP CHF 251.00

- Beautiful Marine Layer reverb sounds
- Two Presets/Channels
- Sustain Footswitch
- Analog dry path
- LED backlit knobs
- Lightweight durable anodized aluminum construction



**HAMMERTONE™
DISTORTION**

Art. N°: 023-4570-000
RRP CHF 99.00

- Fender®-Designed Analog Distortion Circuit
- 2-Band Active Bass & Treble EQ
- Top Mount Input/Output Jacks
- True-Bypass Switching
- Powered by 9-Volt Battery or Center Negative AC Adaptor, Not Included



**HAMMERTONE™
FUZZ**

Art. N°: 023-4574-000
RRP CHF 99.00

- Fender®-Designed Fuzz Circuit
- Optional Octave-Fuzz Switch
- Top Mount Input/Output Jacks
- True-Bypass Switching
- Powered by 9-Volt Battery or Center Negative AC Adaptor, Not Included



**HAMMERTONE™
OVERDRIVE**

Art. N°: 023-4571-000
RRP CHF 99.00

- Unique Fender®-Designed Analog Overdrive Circuit
- Pre-Gain Mid Boost
- Top Mount Input/Output Jacks
- True-Bypass Switching
- Powered by 9-Volt Battery or Center Negative AC Adaptor, Not Included



**HAMMERTONE™
METAL**

Art. N°: 023-4575-000
RRP CHF 99.00

- Fender®-designed High Gain Distortion Circuit
- 2-Band Active Bass & Treble EQ
- Top Mount Input/Output Jacks
- True-Bypass Switching
- Powered by 9-Volt Battery or Center Negative AC Adaptor, Not Included



**HAMMERTONE™
CHORUS**

Art. N°: 023-4576-000
RRP CHF 129.00

- Fender®-designed Chorus Effect
- Type & Tone Switches
- Top Mount Input/Output Jacks
- True-Bypass Switching
- Powered by 9-Volt Center Negative AC Adaptor, Not Included



**HAMMERTONE™
DELAY**

Art. N°: 023-4572-000
RRP CHF 129.00

- Fender®-designed Digital Delay Circuit
- Type & Mod Switches
- Top Mount Input/Output Jacks
- True-Bypass Switching, Analog Dry-Through
- Powered by 9-Volt Center Negative AC Adaptor, Not Included



**HAMMERTONE™
SPACE DELAY**

Art. N°: 023-4577-000
RRP CHF 129.00

- Fender®-designed Tape Delay Effect
- Pattern & Mod Switches
- Top Mount Input/Output Jacks
- True-Bypass Switching, Analog Dry-Through
- Powered by 9-Volt Center Negative AC Adaptor, Not Included



**HAMMERTONE™
FLANGER**

Art. N°: 023-4578-000
RRP CHF 129.00

- Fender®-Designed Flanger Effect
- Resonance & Type Switches
- Top Mount Input/Output Jacks
- True-Bypass Switching
- Powered by 9-Volt Center Negative AC Adaptor, Not Included



**HAMMERTONE™
REVERB**

Art. N°: 023-4573-000
RRP CHF 129.00

- Fender®-designed Reverb Effect
- Type & Tone Switches
- Top Mount Input/Output Jacks
- True-Bypass Switching
- Powered by 9-Volt Center Negative AC Adaptor, Not Included



DISTORTION PEDAL

Art. N°: 023-4501-000
RRP CHF 100.50

- Rock your amp and your guitar tone with the Fender Distortion Pedal, which delivers enormously satisfying distortion and sustain from subtle boost to scorching full-on crunch.
- Responds ideally to your guitar's volume control and works great with a wide variety of amplifiers.



2 SWITCH ABY PEDAL, RED

Art. N°: 023-4506-000
RRP CHF 52.50

Fender's ABY footswitch with passive switcher allows you to plug a single guitar into two amplifiers or plug two guitars into a single amplifier, making it easy and convenient to create a rig with eminent flexibility and a variety of tone options.

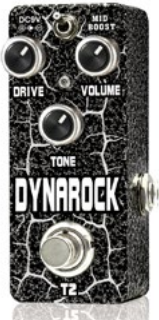


EXP-1 EXPRESSION PEDAL, GRAY

Art. N°: 230-1050-000
RRP CHF 88.50

- Volume (Green LED) & Expression (Red LED) Modes
- Inputs: One - 1/4"
- Connects directly to the MS-4 4-button footswitch input on the Mustang GT, III, IV, V, and to the EXP-1/MS-4 input on the Mustang Floor
- Contains a pass-through jack that allows you to daisy chain the MS-4 4-button footswitch





DYNAROCK
DISTORTION



GOLDEN BROWNIE
DISTORTION PEDAL



CLASSIC ROCK

LAST ONES



DISTORTION

Art. XV-T2
RRP CHF 79.00

- Open dynamic and warm pedal which comes to close to the natural tone of tube amplifiers
- Ultra high gain and great tone.
- Heavy distortion - with a tone so fat heavy pounds you down and grind you into the floor
- With a balanced gain control you can hear each strings
- Xvive DynaRock also acts as the perfect boost pedal

Art. N°: XV-T1
RRP CHF 79.00

- The Marshall JCM800 tones in a box.
- Unbelievable range of overdrive to head-on heavy grind, with easily enough Gain for any sane type of metal.
- Transforms any amp into a fire breathing Monster!
- Really good blues Tone

Art. N°: XV-V1
RRP CHF 59.00

- TRUE BYPASS
- Earphone attached
- Level/Tone /Gain Knob
- Connectors: Input jack, Output jack
- DC Input, Earphone Jack
- Power Requirements:9V DC
- Current Draw:10 mA
- Size: 46(W) x94(D) x50 H)mm

Art. N°: XV-V2
RRP CHF 59.00

- High gain distortion
- Easy tone, volume and gain control
- Wide gain range; light "crunch" to total "saturation"
- Excellent dynamic response
- True Bypass circuitry

LAST ONES



METAL
DISTORTION

LAST ONES



TUBE SQUASHER
OVERDRIVE

LAST ONES



SWEET LEO
OVERDRIVE

LAST ONE



TUBE DRIVE
OVERDRIVE

Art. N°: XV-V3
RRP CHF 59.00

- Heavy saturation distortion
- Tight bass, scooped mids, cutting highs
- Wide range – from dark chugging riffage to all-out shred soloing
- Excellent dynamic response
- True Bypass circuitry

Art. N°: XV-O1
RRP CHF 75.00

- Emulate the smooth overdrive characteristics of a good vacuum tube amp.
- The low cut switch will give a more clear, transparent sound.
- More dynamic range and headroom with tight bass tones.
- It's a low to medium gain overdrive.

Art. XV-O2
RRP CHF 76.00

- Blend a cleaner more elegant overdrive characteristic with shimmering bell type hi-end known from Class A tube amplifiers, to the raunchy and "dirty" overdrive sound, known from cranked up good old tweed amps.
- Tight low end and pulsing clarity even on high gain settings
- Roll back the level pulling the volume on the tone for a clean boost

Art. N°: XV-V7
RRP CHF 62.00

- Wide dynamic range tube overdrive
- Vary from vacuum tube like overdrive effect at low DRIVE settings to screamer clipping-fuzz effect at high DRIVE settings and everything in between
- Wide range tone adjustment with excellent dynamic response
- Volume/Tone/Drive Control
- True Bypass circuitry

LAST ONES



PHASER KING
PHASER

Art. N°: XV-V6
RRP CHF 69.00

- Classic Analog Phaser
- Speed/Sweep/Feedback Control
- Companding (compression/expansion) noise reduction
- Excellent dynamic response
- True Bypass circuitry



ECHOMAN
ANALOG DELAY

Art. N°: XV-V21
RRP CHF 149.00

- A simplified monaural version of the Memory Analog Delay
- Up to 600 msec of delay time with no aliasing distortion.
- Wide bandwidth - good high frequency response even at long delay settings
- Feedback control allows self-oscillation if desired



MAXVERB
REVERB

Art. N°: XV-D1
RRP CHF 99.00

- 50s Plate reverb, 60s Spring reverb & the universal music hall
- Digital Reverb
- Constant Volume Curve
- Blend control - fully dry to fully wet
- Reverb Mode Toggle Switch
- Excellent dynamic response
- True Bypass circuitry



UNDULATOR
STEREO TREMOLO

Art. N°: XV-V16
RRP CHF 107.00

- Warm, rich, wide range tremolo effect
- True stereo spectrum of sound with two amps
- Sine, trapezoid and square wave modulation
- Dual Output channels - stereo/mono
- Speed/shape/depth controls
- Excellent dynamic response
- True Bypass circuitry



LEMON SQUEEZER
COMPRESSOR

Art. N°: XV-V9
RRP CHF 69.00

- TRUE BYPASS
- 100% analog circuit design
- Distortion is kept low so good tone is maintained
- Greatly increases the sustain of guitar notes and chords
- Compresses dynamic range so all signals above the level set by the THRESHOLD are kept at about the same volume
- Power Requirements: 9V DC
- Current Draw: 100 mA
- Size (mm): 46(W) x 94(D) x 50(H)

LAST ONES



MINI DI
DI Box

Art. N°: XV-V13
RRP CHF 69.00

- Ultra low distortion, send signal directly to audio system
- XLR balanced or 1/4" unbalanced output
- On/Off Cabinet Simulator switch
- Ground lift function
- -20db/0/+20db gain settings
- True Bypass circuitry



SINGING AWOAH
ENVELOP FILTER

Art. N°: XV-V17
RRP CHF 65.00

- Double peak envelope swept filter that can be used with either a bass or a 6-string guitar
- Kicks it up a notch with a "Staccato" function that is ideal for fast picking, funk bass and tight rhythm guitar.
- "auto-reset envelope" that listens to your playing & quickly discharges the envelope between your notes.
- Power Requirements: 9V DC.



CHROMATIC TUNER
PEDAL

Art. N°: XV-PT-05
RRP CHF 49.00

- Without Rechargeable Battery
- Chromatic tuning mode
- Tuning Range : B0-B7
- Input + Output: 1/4" Input jack
- True bypass
- Mutes output signal when tuning
- Power: 9V DC Adapter
- Weight: 300g (including battery)



POWER SUPPLY

Art. N°: XV-V19
RRP CHF 96.00

- Power up 8 multiple effects
- Avoid unwanted cable mess and noise
- 7 – 9V inputs/One – 18V input
- Flexible power configuration
- 8 individually regulated outputs
- Short circuit protection design for individual outputs
- Provides stable 9V DC & 18V power

PROFESSIONAL PEDALS



OVERDRIVE FUZZ

Art. N°: XV-W2
RRP CHF 159.00

- Overdrive and Fuzz in one with adjustable blend
- Bass and Treble Control
- Dynamic Response Control
- Wide range of effects possible
- Extremely long sustain fuzz, with a wide range of tonal adjustability
- Tube-like overdrive with gain adjustable from soft distortion to a screaming, highly compressed overdriven tube amp sound.
- True Hard Wire Bypass
- USA Design



WAVE PHASER

Art. N°: XV-W1
RRP CHF 159.00

- Fully adjustable phaser
- “Intelligent” envelope detector
- Adjustable sweep pattern and feedback control
- LFO (internal low frequency oscillator) sweep control
- Wide range of effects possible
- Quiet operation with companding (compression/expansion) noise reduction circuitry.
- True Hard Wire Bypass
- USA Design



Seymour Duncan



805 OVERDRIVE

Art. N°: 805-OD
RRP CHF 192.00

A classic overdrive gives a subtle boost, fat crunch, or a searing tone to your solos. 3-band active EQ shapes your tone just the way you want.



VAPOR TRAIL ANALOG DELAY

Art. N°: VAPOR-DL
RRP CHF 205.00

Vapor Trail is a studio quality analog delay pedal capable of warm, authentic vintage tones with immense clarity and presence. Knob translucent with a cool blue LED that flashes to give you visual feedback on the delay time you have selected – especially handy when you’re playing live on a dimly lit stage.



PICKUP BOOSTER

Art. N°: PICK-BT
RRP CHF 134.00

The Pickup Booster is designed to boost your signal without altering the character of your sound, while allowing you to broaden your tone via the Resonance Switch. This pedal is for those times you need to be just a little louder, cut through the mix with more clarity, or have to play a song with a distinctive humbucker tone on a single-coil guitar.



WISE GRIP COMPRESSOR

Art. N°: VGRIP-CP
RRP CHF 223.00

Vise Grip is a studio-grade compressor pedal designed to enhance the punch, warmth and power of your tone, without sacrificing musicality. Whether you’re looking for a more punchy country twang, more sustain and articulation for your searing metal leads, or a funky rhythm “spank”, the Vise Grip delivers professional results perfect for both the studio and the stage.



SHAPE SHIFTER STEREO TREMOLO

Art. N°: TREM-SS
RRP CHF 269.00

Shape Shifter is a stereo tremolo designed to deliver the classic textures you love with the capability to render extreme effects such as helicopter chops, piano stabs, or backwards swells.



LAST ONE

POWER GRID DISTORTION

Art. N°: SFX-08
RRP CHF 184.00

The Seymour Duncan SFX-08 Power Grid Distortion Pedal is a high-gain, solid state distortion stompbox capable of myriad tones, thanks to a 3-band active EQ section. The Power Grid is a perfect distortion pedal for all genres of rock.



LAST ONES

TWIN TUBE MAYHEM DISTORTION

Art. N°: SFX-04
RRP CHF 343.00

A distortion pedal with a high-quality guitar preamp that includes a built-in boost. Using a duo of premium, mil-spec, subminiature, USA-made Phillips-Sylvania 62051 pentode tubes, it is a great effect pedal for old-school metal, nu metal, thrash, death, and doom.



LAST ONE

TWEAK FUZZ VOLUME & GAIN CONTROL

Art. N°: SFX-02
RRP CHF 242.00

Incorporates a 6-position Tweak knob. The basic tone is a rich, lush, vintage fuzz tone, but by selecting any of the preset tone circuits and playing with the Gain knob you can create myriad unique fuzz tones. Volume, Gain, and Tweak controls. True bypass runs on 9V battery or 9V DC power supply.



LAST ONE

DÉJÀ VU TAP DELAY

Art. N°: SFX-10
RRP CHF 368.00

Features Tap Tempo to match the delay time to the tempo of your music, and its Ratio Control gives you multiple delays for each press of the Tap Tempo footswitch. A tempo "Heartbeat" flashing red LED keeps everybody honest (or, at least, in time), and a Modulation control that lets you add a flange/chorus effect to the time delay.



LAST ONES

SHAPE SHIFTER TAP TREMOLO

Art. N°: SFX-07
RRP CHF 300.00

The Shape Shifter pedal's sonically pure, 100% analog signal path delivers the familiar lush, hypnotic, pulsing tremolo vibes characteristic of '50s tube amps. Digital tap control offers incredible control. Shape and Wave controls provide unparalleled versatility.



BASS
GUITAR



CRYBABY® BASS WAH



CRYBABY® BASS MINI WAH



BASS DISTORTION D.I.+



BASS DISTORTION D.I.+ YELLOW

Art. N°: 105Q
RRP CHF 176.00

- Applies wah effect to highs and mids while leaving lows thick & full
- Q control lets you set the effect response from sharp to smooth
- Convenient auto-return switching so you can step in and out of the effect
- Adjustable boost up to +16dB

Art. N°: CBM105Q
RRP CHF 176.00

- Half the size of the 105Q
- Optimized for bass frequencies
- External Q and Volume controls
- Auto-return switching
- Lightweight aluminum housing

Art. N°: M80
RRP CHF 223.00

- XLR direct out for clear live performances and recordings
- Distortion channel with gain, volume, and blend controls
- Color switch for added fatness
- 3-band EQ and phantom power

Art. N°: M80Y
RRP CHF 188.00

- All the gigging and recording essentials in one box
- D.I. for high-quality direct signal
- Preamp and finely tuned EQ adds punch and character
- Distortion channel for rich, gnarly grit
- XLR and parallel 1/4 outputs and phantom power switch for any circumstance
- Special edition finish



BASS DISTORTION



BASS FUZZ DELUXE



BASS OVERDRIVE



VINTAGE BASS OCTAVE MINI

Art. N°: M85
RRP CHF 176.00

- Co-designed with Fuzzrocious Pedals' Ryan Ratajski
- Based on a famously nasty distortion circuit
- Separate Dry & Wet level controls
- Select Silicon or LED diodes to change clipping character
- Internal control sets the max output level of LED mode

Art. N°: M84
RRP CHF 176.00

- A rare vintage fuzz circuit modified for the modern bassist
- Tone control affects only the fuzz signal, leaving your direct signal clean and clear
- Separate Dry and Fuzz controls for tonal versatility
- Delivers a bold and cutting fuzz tone while retaining clarity and punch
- Analog circuitry for rich organic tone

Art. N°: M89
RRP CHF 176.00

- A unique overdrive circuit designed specifically for bass
- Separate clean + drive controls for tonal versatility
- 100% analog circuitry for rich warm tone

Art. N°: M280G1
RRP CHF 188.00

- Upgrades the warm analog sub-bass vibes of a classic circuit with superior tracking, cleaner headroom, and the versatility that modern players demand, delivering an impressive range of sounds in the lightweight, space-saving MXR mini housing.



SUB OCTAVE BASS FUZZ

Art. N°: M287
RRP CHF 235.00

- Combines two switchable fuzz flavors with a growling sub octave signal
- Separate Dry volume control ensures clean low end retention
- Bass and Treble controls allow you to fine-tune your fuzz signal
- Mid Level control allows you to boost your clean midrange to cut through the mix



BASS OCTAVE DELUXE

Art. N°: M288
RRP CHF 200.00

- 2 independent sub-octave voices
- MID+ switch adds mid range boost
- Constant Headroom Technology™ for exceptional headroom and tracking
- Organic analog tone
- True bypass



BASS CHORUS DELUXE

Art. N°: M83
RRP CHF 223.00

- Chorus and Flanger modes
- Analog bucket brigade technology
- Separate Bass + Treble controls for detailed tone sculpting
- X-OVER mode for increased low end clarity
- Constant Headroom Technology™



BASS PREAMP

Art. N°: M81
RRP CHF 212.00

- 3-Band EQ with sweepable mid-range
- Studio-quality Direct Out
- Constant Headroom Technology™ for clean, crystal clear tone



BASS ENVELOPE FILTER

Art. N°: M82
RRP CHF 199.00

- Classic envelope filter sounds
- All-analog circuitry for rich, organic tone
- Separate DRY and FX level controls for preserving low end
- True bypass



BASS ENVELOPE FILTER BLACKOUT SERIES

Art. N°: M82B
RRP CHF 199.00

- Celebrating the 15th anniversary of the world's bestselling bass pedal line
- Two most popular MXR bass pedals dressed in a matte black stealth finish with gloss black text and a bright yellow LED
- The MXR Bass Envelope Filter delivers classic analog envelope filter sounds while retaining your low end
- **LIMITED EDITION GLOBAL AVAILABILITY: 1500**



BASS COMPRESSOR

Art. N°: M87
RRP CHF 235.00

- Classic studio compressor in a Phase 90-sized pedal
- CHT™ Constant Headroom Technology for clear, clean performance
- Ten Gain Reduction status LEDs
- True bypass



BASS COMPRESSOR BLACKOUT SERIES

Art. N°: M87B
RRP CHF 235.00

- Celebrating the 15th anniversary of the world's bestselling bass pedal line
- Two most popular MXR bass pedals dressed in a matte black stealth finish with gloss black text and a bright yellow LED
- The MXR Bass Compressor captures all the functionality of an iconic studio compressor in pedal form
- **LIMITED EDITION GLOBAL AVAILABILITY: 1500**



BASS INNOVATIONS



THUMP BASS PREAMP

Art. N°: M281
RRP CHF 176.00

- All the tone-sweetening versatility bass players need in an MXR mini housing
- Combines the Echoplex Preamp with a three-band EQ and mid-frequency adjustment
- Punch up a solo, boost your live signal, or sculpt a more aggressive edge onto a passive sound



DYNA COMP® BASS COMPRESSOR MINI

Art. N°: M282G1
RRP CHF 176.00

- Retain the low end, dynamics, and transparency that bass players require
- Clean control adds in your unaffected so that you can maintain low end integrity
- Tone control adjusts upper mid-range to retain the tonal dynamics of your bass



SMALLS PORK & PICKLE BASS OVERDRIVE & FUZZ

Art. N°: WM91
RRP CHF 223.00

- Combines two great bass-friendly effects in a single housing
- The Pork Loin OD circuit provides warm, soft-clipping overdrive
- Russian-Pickle Fuzz provides thick, fatty fuzz
- Blend a sauced up clean signal with either circuit
- Control interface offers a wide range of tweakable tones



DOWNTOWN EXPRESS BASS STATION

Art. N°: 023-4538-000
RRP CHF 249.00

- High-gain distortion effect pedal
- Onboard 3-Band EQ; Texture and Bite switches
- Up to 12dB switchable Boost
- Magnetically latched hinged 9V battery door
- LED-backlit knobs; Fender Amp Jewel LED



SNOW WHITE AUTO WAH GB

Art. N°: MP-SAW
RRP CHF 189.00

Tuned like a real wah. It has very fast tracking and accuracy rarely found auto wahs/envelope filters. Also the pedal has a unique decay control for the filter frequency fall speed. You can set it to be fast for wah effects on every note or slower for a more traditional wah sound. By experimenting with the four knobs you can find a lot of different tones suitable for your guitar and playing style.



BASS SQUEEZER

Art. N°: XV-B1
RRP CHF 59.00

- Smooth studio/live sound
- Increased sustain of bass guitar
- Compresses dynamic range
- Volume/Distortion/Compression -Blend Controls
- On/Off Distortion toggle switch
- Special design bass circuitry
- 100% Analog design with True Bypass circuitry



PARANORMAL BASS EQ DIRECT BOX

Art. N°: SFX-06
RRP CHF 218.00

- Active DI with three-band EQ
- Dedicated contour switch for slapping styles
- Solid construction, balanced XLR out and ground lift
- Balanced XLR output with ground lift
- Bypass footswitch
- LED lights for both footswitches

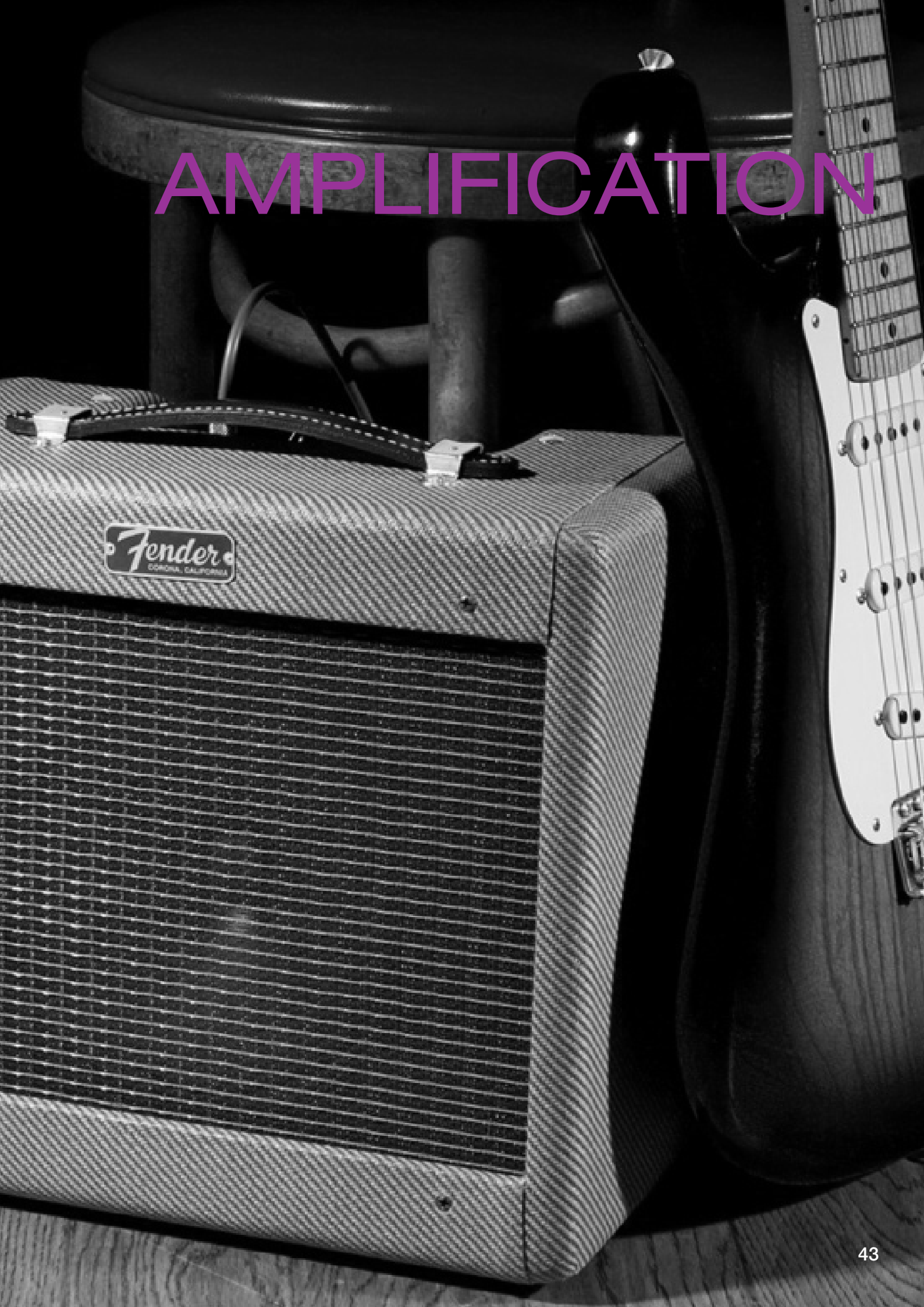


STUDIO BASS COMPRESSOR

Art. N°: BASS-CP
RRP CHF 192.00

The Studio Bass Compressor is a studio-grade, classic compressor in a user friendly 4 knob format. Our unique Blend knob and 3 way mini-toggle switch will allow you to select the frequency range of the original uncompressed signal as well as infinitely adjust the amount of "wet" versus "dry" signal that is routed to the output

AMPLIFICATION



Fender MINI AMPLIFIERS



**MINI TONE MASTER
HEAD & BOX**

Art. N°: 023-4808-000
RRP CHF 79.00

A miniaturized version of the classic Tone-Master. It boasts glorious tone considering its minuscule size. Cab corners, retro grille cloth, and vintage white control knobs.

- 1-watt single-channel amplifier
- Dual 2" speakers
- Tone, volume + gain controls
- 1/4" headphone jack + 9V adapter jack
- Dimensions: 120 mm x 170 mm x 58 mm



**MD20 MINI
DELUXE™ AMP**

Art. N°: 023-4810-000
RRP CHF 79.00

From the functional "dogbone" handle to the chrome control plate and mini "chicken head" knobs, this one is a surefire collector's item! It's still got the tone, too!

- 1-watt single-channel amplifier
- Dual 2" speakers
- Tone, volume + gain controls
- 1/4" headphone jack and 9V adapter jack
- Dimensions: 150 mm x 115 mm x 70 mm



**MD20 MINI
DELUXE™ AMP RED**

Art. N°: 023-4810-009
RRP CHF 79.00

From the functional "dogbone" handle to the chrome control plate and mini "chicken head" knobs, this one is a surefire collector's item! It's still got the tone, too!

- 1-watt single-channel amplifier
- Dual 2" speakers
- Tone, volume + gain controls
- 1/4" headphone jack and 9V adapter jack
- Dimensions: 150 mm x 115 mm x 70 mm



MINI '57 TWIN-AMP™

Art. N°: 023-4811-000
RRP CHF 79.00

Captures the vibe of '50s era Fender®. For the player who can't afford a real or reissue tweed amp, this lets them buy their piece of Fender history!

- 1-watt single-channel amplifier
- Dual 2" speakers
- Tone, volume + gain controls
- Built-in distortion
- 1/4" headphone jack and 9V adapter jack
- Dimensions: 290 mm x 190 mm x 90 mm



MINI '65 TWIN-AMP™

Art. N°: 023-4812-000
RRP CHF 79.00

From the black control plate and miniature knobs to the silver grille cloth, it replicates the classic look of the full-size Twin amp. Plug in and tap into Fender tone at a fraction of the size.

- 1-watt single-channel amplifier
- Two 3" speakers
- Tone, volume + gain controls
- Tilt-back kickstand & belt clip
- 1/8" headphone jack and 9V adapter jack
- Includes 9V battery

Godin GUITARS ACOUSTIC AMPLIFIERS



**GODIN ACOUSTIC
SOLUTIONS ASG-8
BLACK - 120 WATT**

Art. N°: GO-ASG-8-Black
RRP CHF 790.00

- Power: 120 Watts
- Channels: 2
- Inputs: 2x 1/4" Jack & XLR, 1x AUX 1/8" mini-jack
- Outputs: 1x Footswitch, 1x Headphones Out, 1x Mix D.I. Out
- Phantom Power: Yes
- Speaker: 8" Woofer, 1" Tweeter.
- Monitor Type: Slanted
- DSP Effects: Reverb, Echo, Flanger, Chorus (2 types)
- Bluetooth 4.0: Yes
- Finish : Black



**GODIN ACOUSTIC
SOLUTIONS ASG-8
WOOD - 120 WATT**

Art. N°: GO-ASG-8-Wood
RRP CHF 790.00

- Power: 120 Watts
- Channels: 2
- Inputs: 2x 1/4" Jack & XLR, 1x AUX 1/8" mini-jack
- Outputs: 1x Footswitch, 1x Headphones Out, 1x Mix D.I. Out.
- Phantom Power: Yes
- Speaker: 8" Woofer, 1" Tweeter.
- Monitor Type: Slanted
- DSP Effects: Reverb, Echo, Flanger, Chorus (2 types)
- Bluetooth 4.0: Yes
- Finish : Wood



PEDALBOARD



PROFESSIONAL PEDAL-BOARD - SMALL

Art. N°: 099-1084-001
RRP CHF 177.50

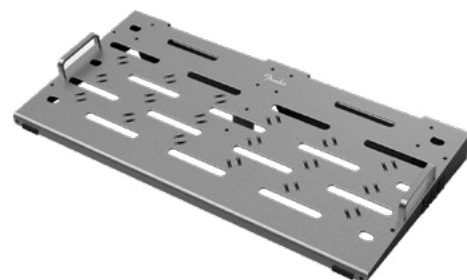
- Precision-Machined Anodized Aluminum Chassis
- Integrated Cable Routing and Management System
- Universal Power-Supply Mounting Bracket
- Strong, Lightweight and Low-Profile Design
- Included Carrycase with Storage Pocket
- Dimensions:
Small - W 45.7cm x D 32.5cm x H 7.5cm



PROFESSIONAL PEDAL-BOARD - MEDIUM

Art. N°: 099-1084-002
RRP CHF 209.00

- Precision-Machined Anodized Aluminum Chassis
- Integrated Cable Routing and Management System
- Universal Power-Supply Mounting Bracket
- Strong, Lightweight and Low-Profile Design
- Included Carrycase with Storage Pocket
- Dimensions:
Medium - W 60.9cm x D 32.5cm x H 7.5cm



PROFESSIONAL PEDAL-BOARD - LARGE

Art. N°: 099-1084-003
RRP CHF 282.50

- Precision-Machined Anodized Aluminum Chassis
- Integrated Cable Routing and Management System
- Universal Power-Supply Mounting Bracket
- Strong, Lightweight and Low-Profile Design
- Included Carrycase with Storage Pocket
- Dimensions:
Large - W 60.9cm x D 40.6cm x H 7.5cm



PROFESSIONAL PEDAL-BOARD CASE - SMALL

Art. N°: 099-6106-501
RRP CHF 199.00

- Break-away case design with removable lid for "Play-In" Option
- Includes two straps to secure pedalboard during transit
- Rubber Feet for non-slip performance
- Interior Dimensions:
Small - W 48,1 cm x D 37,4 cm x H 15,2 cm



PROFESSIONAL PEDAL-BOARD CASE - MEDIUM

Art. N°: 099-6106-502
RRP CHF 249.00

- Break-away case design with removable lid for "Play-In" Option
- Includes two straps to secure pedalboard during transit
- Rubber Feet for non-slip performance
- Interior Dimensions:
Medium - W 63,3 cm x D 37,4 cm x H 15,2 cm



PROFESSIONAL PEDAL-BOARD CASE - LARGE

Art. N°: 099-6106-503
RRP CHF 299.00

- Break-away case design with removable lid for "Play-In" Option
- Includes two straps to secure pedalboard during transit
- Rubber Feet for non-slip performance
- Interior Dimensions:
Large - W 83,6 cm x D 37,4 cm x H 15,2 cm



Pedals not included

F1 FLIGHT CASE
FOR 5 MICRO PEDALS

Art. N°: XV-F1
RRP CHF 69.00

Flight pedal case for mini pedals with 5 plug multi DC power cable



F5 PEDALBOARD
FOR 12 MICRO PEDALS

Art. N°: XV-F5
RRP CHF 89.00

- Hand crafted real wood maple hardwood effects pedal board
- Beautiful wood finish
- Has the capacity to hold up to 12 pcs Xvive micro effect pedals
- Non-slip base
- Size: L 390mm x P 320mm x H 70mm
- Velcro include

PEDALS FOR ELECTRIC GUITAR / DISTORTION

| | | | | |
|---------------------------------|-------------------------------------|----------------------------------|-------|----|
| DUNLOP | Fuzz Face The Standard Red | JD-F2 | 5 | |
| | Silicon Fuzz Face Mini | FFM1 | 5 | |
| | Germanium Fuzz Face Mini | FFM2 | 5 | |
| | Band of Gypsys Fuzz Face Mini | FFM6 | 6 | |
| | Jimi Hendrix Fuzz Face Mini | FFM3 | 6 | |
| | Jimi Hendrix Fuzz Face | JH-F1 | 6 | |
| | Joe Bonamassa Fuzz Face Mini | FFM4 | 6 | |
| | Billy Gibbons Octavio Fuzz | BFG07 | 6 | |
| | MXR | Prime Distortion | M69 | 12 |
| | | Super Badass® Distortion | M75 | 12 |
| Custom Badass™ '78 Distortion | | M78 | 12 | |
| Blue Box™ Octave Fuzz | | M103 | 12 | |
| Distortion+ | | M104 | 13 | |
| Distortion III | | M115 | 13 | |
| Fullbore Metal | | M116 | 13 | |
| Classic 108 Fuzz | | M173 | 13 | |
| Sub Machine Fuzz | | M225 | 13 | |
| Super Badass Variac Fuzz | | M236 | 13 | |
| Octavio Fuzz | | M267 | 13 | |
| Classic 108 Fuzz Mini | | M296 | 13 | |
| Poly Blue Octave | | M306G1 | 14 | |
| Hybrid Fuzz | | CSP041 | 20 | |
| Dime Distortion | | DD-11 | 21 | |
| '68 Shrine Fuzz Face Distortion | | JHMS1 | 22 | |
| '68 Shrine Octavio Fuzz | | JHMS2 | 22 | |
| '68 Shrine Band of Gypsys Fuzz | | JHMS4 | 22 | |
| Slash Octave Fuzz | | SF01 | 22 | |
| WAY HUGE | | Smalls Swollen Pickle Jumbo Fuzz | WM41 | 23 |
| | Smalls Stone Burner Sub Atomic Fuzz | WM81 | 23 | |
| | Swollen Pickle Jumbo Fuzz MKIIS | WHE401S | 25 | |
| FENDER | Pugilist Distortion | 023-4534-000 | 28 | |
| | Duel Pugilist Distortion | 023-4562-000 | 28 | |
| | Full Moon Distortion | 023-4537-000 | 28 | |
| | MTG Tube Distortion | 023-4539-000 | 28 | |
| | MTG La Tube Distortion | 023-4547-000 | 29 | |
| | Compugilist Distortion/Compressor | 023-4551-000 | 29 | |
| | The Pelt Fuzz | 023-4542-000 | 29 | |
| | The Trapper Dual Fuzz | 023-4545-000 | 29 | |
| | Hammertone Distortion | 023-4570-000 | 31 | |
| | Hammertone Fuzz | 023-4574-000 | 31 | |
| | Hammertone Metal | 023-4575-000 | 32 | |
| | Fender Distortion | 023-4501-000 | 33 | |
| | XVIVE | Dynarock Distortion | XV-T2 | 34 |
| Golden Brownie Distortion | | XV-T1 | 34 | |
| Classic Rock | | XV-V1 | 34 | |
| Distortion | | XV-V2 | 34 | |
| Metal | | XV-V3 | 34 | |
| SEYMOUR DUNCAN | Power Grid Distortion | SFX-08 | 38 | |
| | Twin Tube Mayhem | SFX-04 | 38 | |

PEDALS FOR ELECTRIC GUITAR / OVERDRIVE

| | | | | |
|----------------------------|--------------------------------------|------------------------------------|------|----|
| MXR | Boost/Overdrive MXR CAE | MC-402 | 12 | |
| | Custom Badass™ Modified O.D. | M77 | 14 | |
| | Fat Sugar Drive | M94SE | 14 | |
| | GT-OD Overdrive | M193 | 14 | |
| | Super Badass Dynamic O.D. | M249 | 14 | |
| | FOD Drive | M251 | 14 | |
| | Sugar Drive Mini | M294 | 14 | |
| | Timmy Overdrive | CSP027 | 20 | |
| | Gran Torino Overdrive/Boost | CSP033G | 20 | |
| | Raijin Drive | CSP037 | 20 | |
| | Duke of Tone | CSP039 | 20 | |
| | Dookie Drive III | DD25V3 | 21 | |
| | Dookie Drive IV | DD25V4 | 21 | |
| | Raw Dawg - Eric Gales Signature | EG74 | 21 | |
| | EVH 5150 - Eddie Van Halen Overdrive | EVH-5150 | 21 | |
| | Tom Morello Power 50 Overdrive | TBM1 | 22 | |
| | WAY HUGE | Smalls Conspiracy Theory Overdrive | WM20 | 23 |
| | | Smalls Green Rhino Overdrive | WM22 | 23 |
| | | Smalls Red Llama Overdrive | WM23 | 24 |
| | | Smalls STO Overdrive | WM25 | 24 |
| Smalls Supa-Lead Overdrive | | WM31 | 24 | |
| Smalls Geisha Drive | | WM32 | 24 | |
| Saucy Box Overdrive | | WHE205 | 24 | |
| Overdrive | | WHE205OD | 25 | |
| Green Rhino Overdrive MkIV | | WHE207 | 25 | |
| Purple Platypus Octidrive | | WHE800 | 25 | |

| | | | |
|----------------|-----------------------------|--------------|----|
| MAD PROFESSOR | Evolution Orange Underdrive | MP-EOU | 26 |
| | Royal Blue Overdrive | MP-RBO | 26 |
| | The Green Wonder | MP-TGW | 26 |
| | Sweet Honey Overdrive | MP-SHO | 26 |
| | Supreme Matt Schofield | MP-SMS | 27 |
| FENDER | Santa Anna | 023-4533-000 | 29 |
| | Hammertone Overdrive | 023-4571-000 | 31 |
| XVIVE | Tube Squasher | XV-O1 | 34 |
| | Sweet Leo | XV-O2 | 34 |
| | Tube Driver | XV-V7 | 34 |
| | Overdrive Fuzz | XV-W2 | 36 |
| SEYMOUR DUNCAN | 805 Overdrive | 805-OD | 37 |

PEDALS FOR ELECTRIC GUITAR / MODULATION

| | | | |
|------------------------------------|---|--------------|--------|
| DUNLOP | Echoplex <i>Delay</i> | EP103 | 5 |
| | Rotovibe <i>Chorus/Vibrato</i> | JD-4S | 5 |
| | Volume (X) & Expression Pedal | DVP3 | 5 |
| | Volume (X) Mini & Expression Pedal | DVP4 | 5 |
| | Volume (X) 8 Low Friction Band Drive | DVP5 | 6 |
| | Rotovibe WYLDE AUDIO Chorus/Vibrato | WA357 | 6 |
| | ALL CRY BABY WAH | | 7 - 11 |
| Mxr | CAE WAH | MC-404 | 12 |
| | Uni-vibe <i>Chorus/Vibrato</i> | M68 | 14 |
| | Phase 90 | M101 | 15 |
| | Phase 100 | M107 | 15 |
| | Flanger | M117R | 15 |
| | Stereo Chorus | M134 | 15 |
| | Analog Micro Chorus | M148 | 15 |
| | Analog Micro Flanger | M152 | 15 |
| | Carbon Copy Analog Delay | M169 | 15 |
| | Talk Box | M222 | 15 |
| | Analog Chorus | M234 | 16 |
| | Deep Phase Mini | M279 | 16 |
| | Phase 95 Mini | M290 | 16 |
| | Carbon Copy® Deluxe Analog Delay | M292 | 16 |
| | Carbon Copy Mini Analog Delay | M299G1 | 16 |
| | Reverb | M300 | 16 |
| | Tremolo | M305G1 | 16 |
| | Joshua Ambient Echo | M309G1 | 16 |
| | 74' Vintage Phase 90 | CSP026 | 20 |
| | Script Phase 90 | CSP101S-L | 20 |
| | Eddie Van Halen 5150 Chorus | EVH-30 | 21 |
| | Phase 90 Eddie Van Halen | EVH-90 | 21 |
| Flanger Eddie Van Halen | EVH-117 | 21 | |
| '68 Shrine Uni-vibe Chorus/Vibrato | JHMS3 | 22 | |
| WAY HUGE | Smalls Blue Hippo <i>Analog Chorus</i> | WM61 | 24 |
| | Smalls Aqua-Puss <i>Analog Delay</i> | WM71 | 24 |
| | Smalls Attack Vector <i>Phaser & Envelope</i> | WM92 | 24 |
| | Echo-Puss <i>Analog Delay</i> | WHE702S | 25 |
| | Supa-Puss <i>Analog Delay</i> | WHE707 | 25 |
| Atrides Analog Weiriding Module | WHE900 | 25 | |
| MAD PROFESSOR | Deep Blue Delay | MP-DBD | 26 |
| | Snow White Auto Wah | MP-SAW | 26 |
| | Silver Spring Reverb | MP-SSR | 26 |
| FENDER | Lost Highway Phaser | 023-4544-000 | 29 |
| | Tread-Light Wah | 023-4555-000 | 29 |
| | Tread-Light Volume/Expression | 023-4556-000 | 29 |
| | Level Set Buffer | 023-4530-000 | 30 |
| | Layer Reverb | 023-4532-000 | 30 |
| | Mirror Image Delay | 023-4535-000 | 30 |
| | Bubbler Analog Chorus/Vibrato | 023-4540-000 | 30 |
| | Tre-Verb Digital Reverb/Tremolo | 023-4541-000 | 30 |
| | The Pinwheel Rotary Speaker Emulator | 023-4540-000 | 30 |
| | Reflecting Pool Delay/Reverb | 023-4546-000 | 31 |
| | Acoustic Preamp/Preverb | 023-4548-000 | 31 |
| | Pour Over Envelope Filter | 023-4549-000 | 31 |
| | MTG Tube Tremolo | 023-4554-000 | 31 |
| | Dual Marine Layer Reverb | 023-4563-000 | 31 |
| | Hammertone Chorus | 023-4576-000 | 32 |
| | Hammertone Delay | 023-4572-000 | 32 |
| | Hammertone Space Delay | 023-4577-000 | 32 |
| | Hammertone Flanger | 023-4578-000 | 32 |
| | Hammertone Reverb | 023-4573-000 | 32 |
| | EXP-1 Expression Pedal | 230-1050-000 | 33 |

| | | | |
|----------------|--|----------|----|
| XVIVE | Phaser King | XV-V6 | 35 |
| | Echoman <i>Analog Delay</i> | XV-V21 | 35 |
| | Maxverb <i>Reverb</i> | XV-D1 | 35 |
| | Undulator <i>Stereo Tremolo</i> | XV-V16 | 35 |
| | Wave Phaser | XV-W1 | 36 |
| SEYMOUR DUNCAN | Vapor Trail <i>Analog Delay</i> | VAPOR-DL | 37 |
| | Shape Shifter V2 <i>Stereo Tremolo</i> | TREM-SS | 37 |
| | Déjà Vu <i>Tap Delay</i> | SFX-10 | 38 |
| | Shape Shifter V1 <i>Tap Tremolo</i> | SFX-07 | 38 |

PEDALS FOR ELECTRIC GUITAR / BOOST

| | | | |
|----------------|---|------------------|--------|
| DUNLOP | Echoplex Preamp | EP101 | 5 |
| MXR | Boost/Line Driver MXR CAE | MC-401 | 12 |
| | Boost/Overdrive MXR CAE | MC-402 | 12 |
| | Micro Amp | M133 | 17 |
| | Micro Amp Plus | M233 | 17 |
| | Booster Mini | M293 | 17 |
| | Gran Torino <i>Overdrive/Boost</i> | CSP033G | 20 |
| | MXR X Third Man <i>Hardware Double Down</i> | CSP042 | 20 |
| | MAD PROFESSOR | The Green Wonder | MP-TGW |
| FENDER | Engager Boost | 023-4536-000 | 30 |
| SEYMOUR DUNCAN | Pickup Booster | PICK-BT | 37 |

PEDALS FOR ELECTRIC GUITAR / EQUALIZER

| | | | |
|-----|---------------------------|-------|----|
| MXR | 10 Band <i>Graphic EQ</i> | M108S | 17 |
| | 6 Band <i>Graphic EQ</i> | M109S | 17 |

PEDALS FOR ELECTRIC GUITAR / COMPRESSOR

| | | | |
|----------------|--|--------------|----|
| MXR | Studio Compressor | M76 | 18 |
| | Dyna Comp | M102 | 18 |
| | Super Comp | M132 | 18 |
| | Dyna Comp <i>Deluxe</i> | M228 | 18 |
| | Dyna Comp <i>MINI</i> | M291 | 18 |
| | Script Dyna Comp | CSP102SL | 21 |
| MAD PROFESSOR | Forrest Green Compressor | MP-FGC | 26 |
| FENDER | Compugilist <i>Compressor/Distortion</i> | 023-4551-000 | 29 |
| | The Bend Compressor | 023-4531-000 | 30 |
| XVIVE | Lemon Squeezer | XV-V9 | 35 |
| SEYMOUR DUNCAN | Vise Grip | VGRIP-CP | 37 |

PEDALS FOR ELECTRIC GUITAR / TUNER PEDAL

| | | | |
|-------|-----------------------|----------|----|
| XVIVE | Chromatic Tuner Pedal | XV-PT-05 | 35 |
|-------|-----------------------|----------|----|

PEDALS FOR ELECTRIC GUITAR / MISCELLANEOUS EFFECTS

| | | | |
|---------------|---------------------------------------|--------------|----|
| MXR | MXR CAE Buffer | MC-406 | 12 |
| | Smart Gate | M135 | 17 |
| | Smart Gate Pro | M235 | 17 |
| | Noise Clamp <i>Gate</i> | M195 | 18 |
| | Clone Looper | M303G1 | 18 |
| MAD PROFESSOR | Super Black | MP-SB | 27 |
| FENDER | Acoustic Preamp/Preverb | 023-4548-000 | 31 |
| XVIVE | Mini DI | XV-V13 | 35 |
| | Singing Autowah <i>Envelop Filter</i> | XV-V17 | 35 |

PEDALS FOR ELECTRIC GUITAR / UTILITY

| | | | |
|--------|--------------------------------|--------------|----|
| Mxr | A/B Box | M196 | 18 |
| | Tap Tempo | M199 | 19 |
| | TRS Split + Tap | M231 | 19 |
| | DC Brick Power Supply | M237 | 19 |
| | Iso-Brick Power Supply | M238 | 19 |
| | Mini Iso-Brick Power Supply | M239 | 19 |
| | Iso-Brick PRO Power Supply | M242 | 19 |
| FENDER | Engine Room Power Supply LVL5 | 023-0106-005 | 28 |
| | Engine Room Power Supply LVL8 | 023-0106-008 | 28 |
| | Engine Room Power Supply LVL12 | 023-0106-012 | 28 |
| | 2 Switch ABY Pedal | 023-4506-000 | 33 |
| Xvive | Power Supply | XV-V19 | 36 |

PEDALS FOR BASS GUITAR

| | | | |
|----------------|---|--------------|----|
| DUNLOP | Cry Baby Bass Wah | 105Q | 40 |
| | Cry Baby Bass Mini Wah | CBM105Q | 40 |
| Mxr | Bass Distortion DI+ | M80 | 40 |
| | Bass Distortion DI+ Yellow | M80Y | 40 |
| | Bass Distortion | M85 | 40 |
| | Bass Fuzz Deluxe | M84 | 40 |
| | Bass Overdrive | M89 | 40 |
| | Vintage Bass Octave Mini | M280 | 40 |
| | Sub Octave Bass Fuzz | M287 | 41 |
| | Bass Octave Deluxe | M288 | 41 |
| | Bass Chorus Deluxe | M83 | 41 |
| | Bass Preamp | M81 | 41 |
| | Bass Envelope Filter | M82 | 41 |
| | Bass Envelope Filter Blackout Edition | M82B | 41 |
| | Bass Compressor | M87 | 41 |
| | Bass Compressor Blackout Edition | M87B | 41 |
| | Thump Bass Preamp Mini | M281 | 42 |
| | Dyna Compa Bass Compressor Mini | M282 | 42 |
| WAY HUGE | Pork&Pickle <i>Bass Overdrive & Fuzz</i> | WHE214 | 42 |
| | Smalls Pork&Pickle <i>Bass Overdrive & Fuzz</i> | WM91 | 42 |
| FENDER | Downtown Express Distortion | 023-4538-000 | 42 |
| Xvive | Bass Squeezer | XV-B1 | 42 |
| SEYMOUR DUNCAN | Paranormal Bass EQ Direct Box | SFX-06 | 42 |
| | Studio Bass Compressor | BASS-CP | 42 |



WHARRY



Wharry V2 AG - Riedstrasse 1 | CH-4222 Zwingen | Switzerland | Tél.: +41(0)61 766 99 00 | www.wharry.ch

